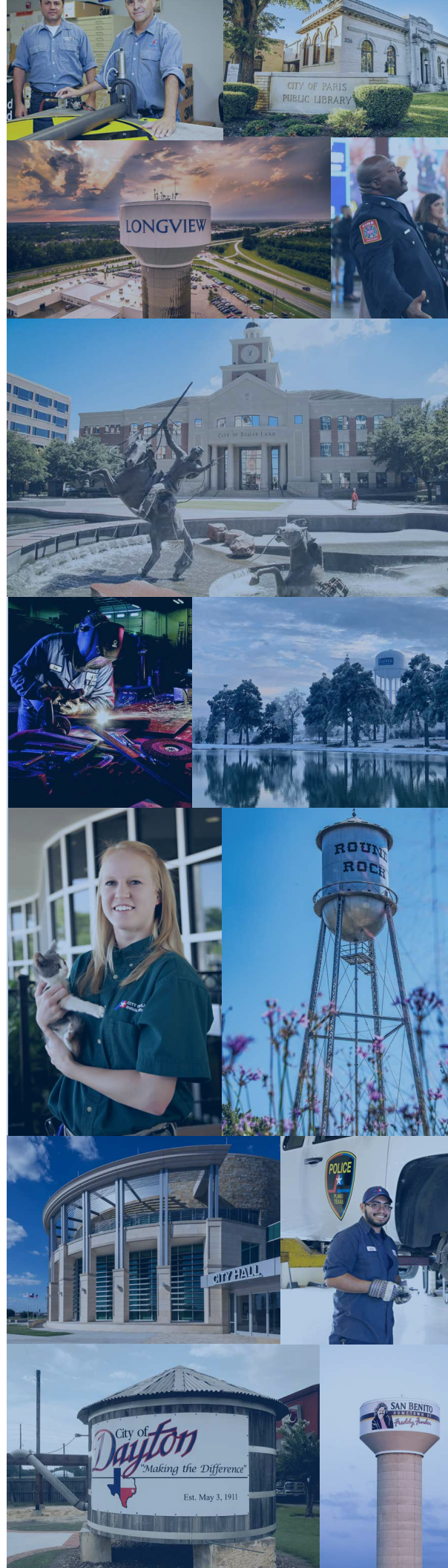




Schedule of Changes in Fiduciary Net Position (by Participating City)

For the year ending December 31, 2023



This page is intentionally left blank.

Introduction

In accordance with *Governmental Accounting Standards Board (GASB) Statement No. 68, Accounting and Financial Reporting for Pensions - An Amendment of GASB Statement No. 27*, TMRS participating cities are required to recognize in their financial statements specific pension amounts, including net pension liability (NPL), deferred outflows and inflows of resources and pension expense.

TMRS' **Schedule of Changes in Fiduciary Net Position (by Participating City)** includes the additions and deductions made to each city's Benefit Accumulation Fund. GASB requires TMRS to allocate the remaining assets held in trust to each participating city. Each city's fiduciary net position is netted against its total pension liability to determine the city's NPL.

TMRS has also completed a SOC-1 Type 2 audit on the controls over the calculation and allocation of additions and deductions to the participating city accounts. The SOC-1 Type 2 Audit Report can be found on the TMRS City Portal.

Independent Auditors' Report



CliftonLarsonAllen LLP
CLAconnect.com

INDEPENDENT AUDITORS' REPORT

Board of Trustees
Texas Municipal Retirement System
Austin, Texas

Report on the Audit of the Financial Statements

Opinion

We have audited the accompanying financial statements of the Texas Municipal Retirement System (TMRS), as of and for the year ended December 31, 2023, and the related notes to the financial statements, which collectively comprise the TMRS' basic financial statements, as listed in the table of contents.

In our opinion, the financial statements referred to above present fairly, in all material respects, the fiduciary net position of the TMRS as of December 31, 2023, and the changes in fiduciary net position for the year then ended in accordance with accounting principles generally accepted in the United States of America.

Basis for Opinion

We conducted our audit in accordance with auditing standards generally accepted in the United States of America (GAAS). Our responsibilities under those standards are further described in the Auditors' Responsibilities for the Audit of the Financial Statements section of our report. We are required to be independent of the TMRS and to meet our other ethical responsibilities, in accordance with the relevant ethical requirements relating to our audit. We believe that the audit evidence we have obtained is sufficient and appropriate to provide a basis for our audit opinion.

Responsibilities of Management for the Financial Statements

Management is responsible for the preparation and fair presentation of the financial statements in accordance with accounting principles generally accepted in the United States of America, and for the design, implementation, and maintenance of internal control relevant to the preparation and fair presentation of financial statements that are free from material misstatement, whether due to fraud or error.

In preparing the financial statements, management is required to evaluate whether there are conditions or events, considered in the aggregate, that raise substantial doubt about the TMRS' ability to continue as a going concern for twelve months beyond the financial statement date, including any currently known information that may raise substantial doubt shortly thereafter.

Independent Auditors' Report

CONTINUED

Board of Trustees
Texas Municipal Retirement System

Auditors' Responsibilities for the Audit of the Financial Statements

Our objectives are to obtain reasonable assurance about whether the financial statements as a whole are free from material misstatement, whether due to fraud or error, and to issue an auditors' report that includes our opinion. Reasonable assurance is a high level of assurance but is not absolute assurance and therefore is not a guarantee that an audit conducted in accordance with GAAS will always detect a material misstatement when it exists. The risk of not detecting a material misstatement resulting from fraud is higher than for one resulting from error, as fraud may involve collusion, forgery, intentional omissions, misrepresentations, or the override of internal control. Misstatements are considered material if there is a substantial likelihood that, individually or in the aggregate, they would influence the judgment made by a reasonable user based on the financial statements.

In performing an audit in accordance with GAAS, we:

- Exercise professional judgment and maintain professional skepticism throughout the audit.
- Identify and assess the risks of material misstatement of the financial statements, whether due to fraud or error, and design and perform audit procedures responsive to those risks. Such procedures include examining, on a test basis, evidence regarding the amounts and disclosures in the financial statements.
- Obtain an understanding of internal control relevant to the audit in order to design audit procedures that are appropriate in the circumstances, but not for the purpose of expressing an opinion on the effectiveness of the TMRS' internal control. Accordingly, no such opinion is expressed.
- Evaluate the appropriateness of accounting policies used and the reasonableness of significant accounting estimates made by management, as well as evaluate the overall presentation of the financial statements.
- Conclude whether, in our judgment, there are conditions or events, considered in the aggregate, that raise substantial doubt about the TMRS' ability to continue as a going concern for a reasonable period of time.

We are required to communicate with those charged with governance regarding, among other matters, the planned scope and timing of the audit, significant audit findings, and certain internal control related matters that we identified during the audit.

Required Supplementary Information

Accounting principles generally accepted in the United States of America require that the management's discussion and analysis and money-weighted rate of return – pension trust fund, as listed in the table of contents, be presented to supplement the basic financial statements. Such information is the responsibility of management and, although not a part of the basic financial statements, is required by the Governmental Accounting Standards Board who considers it to be an essential part of financial reporting for placing the basic financial statements in an appropriate operational, economic, or historical context. We have applied certain limited procedures to the required supplementary information in accordance with GAAS, which consisted of inquiries of management about the methods of preparing the information and comparing the information for consistency with management's responses to our inquiries, the basic financial statements, and other knowledge we obtained during our audit of the basic financial statements. We do not express an opinion or provide

Independent Auditors' Report

CONTINUED

Board of Trustees
Texas Municipal Retirement System

any assurance on the information because the limited procedures do not provide us with sufficient evidence to express an opinion or provide any assurance.


Supplementary Information

Our audit was conducted for the purpose of forming an opinion on the financial statements that collectively comprise the TMRS' basic financial statements. The combined schedule of changes in fiduciary net position, schedule of administrative expenses and investment expenses, and schedule of professional services (supplementary information) are presented for purposes of additional analysis and are not a required part of the basic financial statements. Such information is the responsibility of management and was derived from and relates directly to the underlying accounting and other records used to prepare the basic financial statements. The information has been subjected to the auditing procedures applied in the audit of the basic financial statements and certain additional procedures, including comparing and reconciling such information directly to the underlying accounting and other records used to prepare the basic financial statements or to the basic financial statements themselves, and other additional procedures in accordance with GAAS. In our opinion, the supplementary information is fairly stated, in all material respects, in relation to the basic financial statements as a whole.

Other Information

Management is responsible for the other information included in the annual report. The other information comprises the introductory, investment, actuarial and statistical sections but does not include the basic financial statements and our auditors' report thereon. Our opinion on the basic financial statements do not cover the other information, and we do not express an opinion or any form of assurance thereon.

In connection with our audit of the basic financial statements, our responsibility is to read the other information and consider whether a material inconsistency exists between the other information and the basic financial statements, or the other information otherwise appears to be materially misstated. If, based on the work performed, we conclude that an uncorrected material misstatement of the other information exists, we are required to describe it in our report.



CliftonLarsonAllen LLP

Baltimore, Maryland
June 12, 2024

This page is intentionally left blank.

Schedule of Changes in Fiduciary Net Position (by Participating City) For the Year Ended December 31, 2023

City Number	Participating City	Balance at January 1, 2023	ADDITIONS		
			City Contributions	Member Contributions	Net Investment Income
00004	Abernathy	1,517,109	35,814	48,267	173,812
00006	Abilene	311,458,337	6,827,189	4,741,105	35,949,648
00007	Addison	140,394,280	4,345,761	1,890,636	16,207,573
00008	Agua Dulce	70,548	9,794	5,352	8,280
00010	Alamo	12,792,904	407,991	336,073	1,482,636
00012	Alamo Heights	26,199,810	1,093,330	472,135	3,032,646
00014	Alba	567,515	38,496	14,236	65,526
00016	Albany	1,089,551	31,226	35,086	124,986
00017	Aledo	1,550,009	157,189	80,374	179,233
00018	Alice	45,463,288	466,676	569,118	5,249,826
00019	Allen	249,752,924	10,143,549	4,771,413	28,972,918
00021	Alma		39,206	19,645	-
00020	Alpine	8,984,727	58,793	178,231	1,035,845
00022	Alto	1,463,365	59,549	42,578	169,427
00023	Alton	8,352,773	559,595	345,429	968,310
00024	Alvarado	5,719,667	313,597	355,207	663,481
00026	Alvin	68,787,505	2,488,288	1,027,612	7,957,617
00028	Alvord	597,378	21,009	18,826	69,380
00030	Amarillo	472,395,899	12,744,380	7,528,414	54,502,714
00032	Amherst	423,645		10,869	48,860
00034	Anahuac	1,297,859	37,708	25,792	150,180
00036	Andrews	27,892,758	987,518	432,580	3,223,698
00038	Angleton	28,437,574	1,064,803	554,847	3,291,061
00040	Anna	13,802,723	1,835,718	913,292	1,610,122
00041	AnnettaEr	154,097	30,135	21,011	18,063
00044	Anson	1,615,004	14,195	48,613	186,265
00045	Anthony	1,564,372	197,719	112,232	180,329
00048	Aransas Pass	16,993,013	632,077	403,454	1,963,896
00050	Archer City	1,238,328	23,576	23,342	143,447
00049	Arcola	414,907	44,994	66,559	48,617
00051	Argyle	7,317,751	323,923	188,955	848,165
00052	Arlington	1,413,468,010	21,822,391	15,832,543	163,592,578
00054	Arp	884,898	48,862	34,135	102,463
00060	Aspermont	711,627		17,019	82,282
00062	Athens	33,650,019	1,370,934	593,478	3,894,921
00064	Atlanta	4,859,581	130,796	95,055	562,572
00066	Aubrey	6,561,147	493,066	546,983	763,843
00067	Aurora	803	5,486	2,329	95
00072	Avery	6,174	1,675	4,870	729
00074	Avinger	162,147	705	2,073	18,831
00075	Azle	29,745,972	1,745,046	724,086	3,449,907
00077	Baird	826,989	4,656	23,282	95,195
00078	Balch Springs	42,601,694	1,781,472	883,792	4,949,486
00079	Balcones Heights	17,375,451	388,066	253,165	2,009,238

Schedule of Changes in Fiduciary Net Position (by Participating City)
For the Year Ended December 31, 2023
CONTINUED

DEDUCTIONS				
Retirement Benefits	Member Account Refunds	Administrative Expenses	Other	Balance at December 31, 2023
68,563	6,600	1,117	8	1,698,714
21,012,169	730,796	229,328	1,602	337,002,385
8,742,644	128,840	103,373	722	153,862,672
		52	0	93,922
578,071	86,140	9,419	66	14,345,907
1,471,582	42,972	19,291	135	29,263,942
13,356		418	3	671,997
54,242		802	6	1,225,799
38,791	22,369	1,141	8	1,904,496
2,065,757	47,951	33,475	234	49,601,492
8,470,854	344,357	183,894	1,285	284,640,415
				58,850
369,368	71,819	6,615	46	9,809,747
36,440	4,039	1,077	8	1,693,354
258,574	84,328	6,150	43	9,877,012
142,086	63,883	4,211	29	6,841,743
4,027,239	147,125	50,648	354	76,035,656
18,999		440	3	687,151
30,246,559	1,002,204	347,826	2,430	515,572,387
8,453	7,565	312	2	467,042
32,971	29,114	956	7	1,448,491
1,392,754	80,831	20,538	143	31,042,287
1,393,519	197,825	20,939	146	31,735,856
374,050	58,098	10,163	71	17,719,473
		113	1	223,192
39,250	19,324	1,189	8	1,804,305
121,613	33,175	1,152	8	1,898,704
755,447	93,042	12,512	87	19,131,352
74,267		912	6	1,353,508
8,110	23,503	306	2	543,156
250,217	13,135	5,388	38	8,410,016
74,691,857	1,159,654	1,040,740	7,272	1,537,815,999
38,771	8,595	652	5	1,022,337
24,165		524	4	786,234
2,147,645	191,192	24,777	173	37,145,566
218,309	460	3,578	25	5,425,632
121,530	149,795	4,831	34	8,088,849
		1		8,712
		5	0	13,443
19,606		119	1	164,029
1,060,909	138,767	21,902	153	34,443,280
33,871	10,653	609	4	904,985
2,108,068	251,097	31,368	219	47,825,692
911,455	55,050	12,794	89	19,046,531

Schedule of Changes in Fiduciary Net Position (by Participating City)
For the Year Ended December 31, 2023
 CONTINUED

City Number	Participating City	Balance at January 1, 2023	ADDITIONS		
			City Contributions	Member Contributions	Net Investment Income
00080	Ballinger	4,020,714	306,534	121,023	463,212
00082	Balmorhea	66,743		2,065	7,634
00083	Bandera	3,242,595	125,837	86,242	374,999
00084	Bangs	2,413,404	56,752	43,751	279,209
00090	Bartlett	1,880,323	61,718	58,614	218,402
00091	Bartonville	1,253,506	128,969	57,356	145,680
00092	Bastrop	25,867,199	1,139,392	558,215	3,004,573
00094	Bay City	36,730,385	830,707	440,461	4,239,634
00093	Bayou Vista	564,857	12,168	23,310	65,371
00096	Baytown	353,511,669	14,282,339	5,693,419	40,931,036
00103	Beasley		2,682	3,580	-
00098	Beaumont	478,163,689	13,946,645	5,014,204	55,266,233
00100	Bedford	45,957,123	4,706,138	1,958,193	5,354,460
00101	Bee Cave	8,748,244	504,785	368,840	1,014,386
00102	Beeville	14,538,997	61,223	263,891	1,675,097
00106	Bellaire	82,269,734	2,690,002	929,419	9,506,673
00109	Bellmead	16,659,059	509,923	327,720	1,925,575
00110	Bells	530,968	21,865	41,365	61,311
00112	Bellville	11,436,442	454,781	134,075	1,322,452
00114	Belton	27,965,914	1,167,835	804,612	3,236,408
00118	Benbrook	63,442,595	1,815,536	791,824	7,343,188
00120	Benjamin	6,134	13,398	8,050	725
00121	Berryville	226,503	4,091	9,643	26,150
00123	Bertram	886,708	47,592	52,998	102,776
00119	Beverly Hills	10,739	14,031	30,769	1,269
00124	Big Lake	6,584,216	305,337	114,607	763,548
00126	Big Sandy	927,805	26,711	21,099	106,683
00128	Big Spring	54,010,464	1,918,570	751,538	6,240,455
00132	Bishop	2,778,446	27,547	47,008	319,552
00134	Blanco	1,368,021	79,264	84,710	158,490
00140	Blooming Grove	555,589	23,841	10,494	64,437
00142	Blossom	977,041	17,071	12,913	112,991
00143	Blue Mound	1,177,206	58,375	66,444	135,846
00144	Blue Ridge	284,335	7,133	22,492	32,523
00148	Boerne	71,148,773	3,959,051	1,452,820	8,260,134
00150	Bogata	449,424	413	12,918	52,053
00152	Bonham	20,380,105	663,400	419,431	2,358,327
00154	Booker	1,295,583	29,067	23,904	150,099
00156	Borger	47,418,069	1,463,575	760,581	5,477,149
00158	Bovina	493,975	1,185	19,743	56,637
00160	Bowie	18,182,951	417,605	228,200	2,101,483
00162	Boyd	1,473,240	53,214	95,756	170,098
00166	Brady	13,237,144	484,220	311,396	1,529,242
00170	Brazoria	5,340,418	85,830	71,288	617,191

Schedule of Changes in Fiduciary Net Position (by Participating City)
For the Year Ended December 31, 2023
CONTINUED

DEDUCTIONS				
Retirement Benefits	Member Account Refunds	Administrative Expenses	Other	Balance at December 31, 2023
431,618	38,955	2,960	21	4,437,929
		49	0	76,392
192,909	10,530	2,388	17	3,623,829
148,582	2,904	1,777	12	2,639,841
36,157	18,884	1,384	10	2,162,622
67,408	39,525	923	6	1,477,647
891,437	131,603	19,046	133	29,527,160
2,077,080	208,600	27,045	189	39,928,274
23,613	19,876	416	3	621,798
17,465,134	499,074	260,292	1,819	396,192,145
				6,263
29,282,505	686,002	352,073	2,460	522,067,732
2,248,614	262,040	33,838	236	55,431,185
117,816	101,888	6,441	45	10,410,064
599,447	57,670	10,705	75	15,871,311
5,673,052	86,833	60,575	423	89,574,944
603,197	75,147	12,266	86	18,731,581
17,932	1,211	391	3	635,972
781,070	8,960	8,421	59	12,549,239
1,289,103	44,733	20,591	144	31,820,198
2,877,960	91,030	46,713	326	70,377,114
5,059		5	0	23,244
13,680		167	1	252,539
19,045	15,305	653	5	1,055,066
		8	0	56,799
234,919	15,689	4,848	34	7,512,218
88,060	1,227	683	5	992,323
3,239,647	373,272	39,768	278	59,268,061
157,420	5,047	2,046	14	3,008,026
32,203	78,951	1,007	7	1,578,316
24,040		409	3	629,909
41,462		719	5	1,077,830
27,488	38,273	867	6	1,371,236
1,678		209	1	344,595
3,437,101	147,931	52,387	366	81,182,993
9,970		331	2	504,505
1,332,039	41,497	15,006	105	22,432,617
18,302		954	7	1,479,391
2,925,445	91,652	34,914	244	52,067,119
26,542	1,289	364	3	543,343
714,228	17,551	13,388	94	20,184,978
53,144	12,794	1,085	8	1,725,278
441,870	108,224	9,747	68	15,002,092
251,886	9,399	3,932	27	5,849,482

Schedule of Changes in Fiduciary Net Position (by Participating City)
For the Year Ended December 31, 2023
 CONTINUED

City Number	Participating City	Balance at January 1, 2023	ADDITIONS		
			City Contributions	Member Contributions	Net Investment Income
00172	Breckenridge	8,159,987	224,293	131,320	941,264
00174	Bremond	957,051	50,420	21,339	111,362
00176	Brenham	51,030,209	2,280,713	666,486	5,894,353
00177	Bridge City	20,938,500	660,565	267,436	2,422,246
00178	Bridgeport	14,129,321	728,848	392,155	1,634,335
00180	Bronte	513,088	23,331	15,249	59,576
00182	Brookshire	7,316,578	162,816	104,036	846,789
00184	Brownfield	22,226,622	373,686	208,092	2,568,365
00186	Brownsboro	230,260	42,588	18,105	26,970
10188	Brownsville	393,767,472	12,251,047	5,003,345	45,570,944
20188	Brownsville Public Utility	188,944,860	6,455,585	2,621,178	21,875,163
10190	Brownwood	53,637,906	1,556,936	810,904	6,201,493
30190	Brownwood Health Dept.	1,690,180	88,849	58,729	194,928
20190	Brownwood Public Library	426,526		7,751	49,270
00195	Bruceville-Eddy	1,489,318	31,437	48,918	171,652
00192	Bryan	410,347,448	7,350,594	5,416,546	47,560,119
00193	Bryson	662,493	405	7,462	76,420
00194	Buda	16,284,617	1,295,719	640,086	1,897,671
00196	Buffalo	1,673,420	28,773	36,330	193,337
00198	Bullard	2,608,288	201,831	111,773	302,389
00203	Bulverde	3,788,384	206,887	137,925	440,398
00199	Bunker Hill Village	3,973,710	94,088	62,487	459,926
00200	Burkburnett	14,959,677	425,169	286,724	1,725,881
00202	Burleson	112,328,502	6,224,928	2,494,246	13,025,384
00204	Burnet	27,397,570	1,191,096	635,493	3,171,485
00206	Burton	32,289	48		3,768
00205	Byers	21,133	5,724	4,112	2,494
00207	Cactus	2,952,385	304,660	222,380	341,103
00208	Caddo Mills	1,003,883	87,830	93,601	116,789
00210	Caldwell	12,266,509	226,545	149,437	1,417,496
00211	Callisburg	10,896	4,769	3,280	1,287
00212	Calvert	477,693	65,727	28,882	54,649
00214	Cameron	5,471,563	236,741	105,972	632,930
00216	Campbell	174,963	17,597	2,102	20,519
00220	Canadian	4,734,411	212,898	81,170	548,000
00221	Caney City	65,058	1,122	3,691	7,619
00222	Canton	13,048,018	647,622	335,060	1,513,217
00224	Canyon	34,040,988	1,067,374	551,006	3,939,410
00227	Carmine	222,740	1,749	4,087	25,728
00228	Carrizo Springs	5,088,874	82,469	90,503	586,196
00230	Carrollton	469,473,589	8,416,193	4,980,002	54,253,808
00232	Carthage	31,598,932	921,843	328,392	3,651,256
00231	Castle Hills	19,478,793	498,158	285,829	2,252,240
00234	Castroville	6,516,636	280,396	159,497	753,781

Schedule of Changes in Fiduciary Net Position (by Participating City)
For the Year Ended December 31, 2023
CONTINUED

DEDUCTIONS				
Retirement Benefits	Member Account Refunds	Administrative Expenses	Other	Balance at December 31, 2023
521,823	31,987	6,008	42	8,897,004
10,964	1,011	705	5	1,127,486
3,052,404	91,342	37,574	263	56,690,179
1,499,333	89,654	15,417	108	22,684,235
663,265	80,838	10,403	73	16,130,079
15,536		378	3	595,327
166,566	65,450	5,387	38	8,192,778
1,149,821	94,387	16,366	114	24,116,078
31,810		170	1	285,942
21,388,836	499,231	289,932	2,026	434,412,784
9,581,551	213,640	139,121	972	209,961,504
3,068,627	241,280	39,494	276	58,857,562
75,930	6,901	1,244	9	1,948,600
1,741		314	2	481,490
46,928	2,642	1,097	8	1,690,650
17,785,795	564,253	302,140	2,111	452,020,408
34,939		488	3	711,350
575,764	50,213	11,990	84	19,480,042
127,525		1,232	9	1,803,093
122,777		1,920	13	3,099,571
154,941	8,690	2,789	19	4,407,154
130,022		2,926	20	4,457,244
920,082	108,197	11,015	77	16,358,079
5,347,479	153,929	82,708	578	128,488,366
1,374,566	197,762	20,173	141	30,803,003
		24	0	36,081
		16	0	33,447
73,322	15,682	2,174	15	3,729,336
14,344	15,434	739	5	1,271,581
661,061	3,185	9,032	63	13,386,647
		8	0	20,224
39,445	6,322	352	2	580,831
279,643	24,546	4,029	28	6,138,960
5,426		129	1	209,627
241,436		3,486	24	5,331,532
	2,303	48	0	75,138
525,307	16,473	9,607	67	14,992,463
1,985,856	32,497	25,064	175	37,555,184
101		164	1	254,038
320,141	54,138	3,747	26	5,469,990
24,126,077	498,925	345,675	2,415	512,150,500
1,903,670	48,207	23,266	163	34,525,116
1,009,794	3,501	14,342	100	21,487,282
346,865	19,595	4,798	34	7,339,019

Schedule of Changes in Fiduciary Net Position (by Participating City)
For the Year Ended December 31, 2023
 CONTINUED

City Number	Participating City	Balance at January 1, 2023	ADDITIONS		
			City Contributions	Member Contributions	Net Investment Income
00238	Cedar Hill	120,197,763	4,457,343	2,108,209	13,925,526
00239	Cedar Park	116,045,597	7,226,986	3,002,309	13,490,473
00240	Celeste	137,180	6,058	8,484	15,806
00242	Celina	15,484,216	2,388,565	1,457,712	1,807,636
00244	Center	15,404,511	422,346	276,043	1,785,105
00246	Centerville	1,222,686	45,828	18,331	142,087
00247	Chandler	1,270,332	155,047	114,980	147,732
00248	Charlotte	846,125	22,022	23,345	98,098
00249	Chester	672,055	2,547	2,623	77,793
00245	Chico	451,142	8,883	10,353	52,182
00250	Childress	9,055,481	444,943	183,536	1,047,168
00251	Chillicothe	319,716	47,008	15,961	37,495
00253	Chireno	1,755,598	80,696	26,224	203,195
00254	Christine	61,538		610	7,092
00255	Cibolo	20,109,715	1,410,050	853,800	2,338,916
00256	Cisco	4,386,986	130,622	90,836	506,952
00258	Clarendon	1,154,744	6,226	36,623	133,459
00259	Clarksville	3,922,954	17,711	44,276	453,255
00260	Clarksville City	1,324,745	8,103	15,005	152,330
00263	Clear Lake Shores	2,703,788	108,218	60,010	313,567
00264	Cleburne	85,764,551	2,910,660	1,289,580	9,908,151
00266	Cleveland	13,296,261	594,658	280,633	1,537,517
00268	Clifton	2,867,652	84,335	66,093	331,065
00271	Clute	25,792,160	638,351	445,954	2,978,097
00272	Clyde	5,135,830	316,875	162,687	595,560
00274	Coahoma	1,019,374	17,957	13,665	117,949
00276	Cockrell Hill	6,177,566	141,487	107,303	715,340
00279	Coldspring		1,716	2,723	-
00278	Coleman	15,438,953	517,700	203,590	1,783,480
00280	College Station	320,737,625	12,446,091	5,099,559	37,118,994
00281	Colleyville	71,371,092	1,736,594	1,218,053	8,259,328
00282	Collinsville	611,125	47,580	43,518	70,946
00283	Colmesneil	363,122	12,700	7,763	42,218
00284	Colorado City	7,045,539	111,251	96,880	815,644
00286	Columbus	9,387,792	245,276	127,970	1,086,383
00288	Comanche	3,252,346	159,643	74,950	374,669
00289	Combes	377,202	57,500	46,446	44,254
00290	Commerce	13,261,164	410,001	215,563	1,532,125
00294	Conroe	156,321,155	6,837,050	2,943,379	18,120,092
00295	Converse	33,540,725	1,573,049	771,643	3,885,828
00298	Cooper	1,506,405	32,393	33,743	173,756
00299	Coppell	180,217,958	5,621,647	2,377,737	20,874,569
00297	Copper Canyon	695,543	36,698	26,429	80,945
00300	Copperas Cove	66,771,165	2,111,944	976,246	7,721,539

Schedule of Changes in Fiduciary Net Position (by Participating City)
For the Year Ended December 31, 2023
CONTINUED

DEDUCTIONS				
Retirement Benefits	Member Account Refunds	Administrative Expenses	Other	Balance at December 31, 2023
5,249,639	101,028	88,502	618	135,249,053
3,602,565	211,170	85,445	597	135,865,588
2,142	5,086	101	1	160,198
229,165	144,172	11,401	80	20,753,311
602,875	43,100	11,342	79	17,230,609
11,169		900	6	1,416,857
66,654	7,717	935	7	1,612,779
14,608	11,052	623	4	963,303
46,022		495	3	708,498
34,632	851	332	2	486,741
493,538	64,907	6,668	47	10,165,968
	9,975	235	2	409,968
134,671	2,414	1,293	9	1,927,326
1,185		45	0	68,009
661,226	69,626	14,807	103	23,966,718
250,962	17,488	3,230	23	4,843,693
45,751	2,243	850	6	1,282,201
134,575	6,836	2,888	20	4,293,876
94,759		975	7	1,404,441
118,461		1,991	14	3,065,118
6,071,426	138,822	63,149	441	93,599,104
632,569	57,838	9,790	68	15,008,804
316,954	54,578	2,111	15	2,975,486
1,160,948	129,539	18,991	133	28,544,951
160,009	29,993	3,782	26	6,017,142
38,314		751	5	1,129,876
261,279	37,803	4,549	32	6,838,033
				4,439
930,535	56,298	11,368	79	16,945,442
16,791,712	817,758	236,160	1,650	357,554,989
3,504,870	20,979	52,551	367	79,006,300
33,809		450	3	738,907
6,195		267	2	419,339
315,068	55,406	5,188	36	7,693,616
409,359	3,365	6,912	48	10,427,735
251,257	53,185	2,395	17	3,554,754
27,360	6,723	278	2	491,040
591,630	8,234	9,764	68	14,809,156
7,107,583	414,087	115,100	804	176,584,103
1,527,368	190,943	24,696	173	38,028,066
109,143		1,109	8	1,636,037
8,823,065	130,914	132,695	927	200,004,309
25,810		512	4	813,291
3,525,165	146,463	49,164	344	73,859,759

Schedule of Changes in Fiduciary Net Position (by Participating City)
For the Year Ended December 31, 2023
 CONTINUED

City Number	Participating City	Balance at January 1, 2023	ADDITIONS		
			City Contributions	Member Contributions	Net Investment Income
00301	Corinth	48,900,552	2,164,911	964,632	5,674,428
00302	Corpus Christi	840,565,052	30,148,963	12,751,421	97,094,524
00304	Corrigan	1,961,511	49,539	70,169	225,290
00306	Corsicana	57,437,031	1,532,617	757,650	6,637,267
00307	Cottonwood Shores	195,669	57,621	60,231	23,096
00308	Cotulla	2,841,036	121,848	103,437	325,761
00311	Covington	15,345	3,595	8,066	1,793
00310	Crandall	5,297,134	262,313	167,689	614,677
00312	Crane	7,696,167	138,090	122,203	889,090
00314	Crawford	216,236	3,032	13,297	25,087
00315	Creedmoor	45,080	16,627	14,509	5,322
00316	Crockett	11,509,910	441,216	214,629	1,328,775
00318	Crosbyton	1,542,068	6,076	22,095	177,376
00321	Cross	870,426	109,716	95,169	101,985
00320	Cross Plains	1,561,088	23,073	17,219	181,026
00322	Crowell	91,090	19,291	16,952	10,710
00323	Crowley	24,023,217	1,177,920	615,637	2,784,562
00325	Crystal Beach	513,429			59,354
00324	Crystal City	4,786,055	35,020	128,677	546,954
00326	Cuero	16,038,672	518,804	283,190	1,858,415
00328	Cumby	344,648	11,257	24,157	39,597
00332	Daingerfield	2,890,861	59,578	45,135	334,040
00334	Daisetta	374,397	1,159	9,348	43,314
00336	Dalhart	9,454,652	129,152	157,120	1,087,795
01502	Dallas P&F Pension System	433,355	257,279	192,821	51,197
00339	Dalworthington Gardens	8,464,751	436,485	139,325	981,519
00340	Danbury	551,087	21,600	19,217	63,303
00341	Darrouzett	274,635	4,026	5,716	31,765
00342	Dawson		16,625	14,382	-
00344	Dayton	10,407,763	899,784	384,993	1,200,883
00352	De Leon	731,960	23,701	28,556	83,934
00346	Decatur	29,165,335	1,245,902	615,478	3,380,188
00348	Deer Park	146,680,400	3,371,275	1,728,860	16,962,621
00350	Dekalb	1,132,855	36,104	47,350	130,835
00354	Del Rio	34,225,652	1,604,501	1,149,360	3,965,434
00353	Dell City	365,646	20,871	6,039	42,105
00356	Denison	68,793,801	1,604,310	1,054,475	7,943,798
00358	Denton	519,984,941	21,790,165	8,535,599	60,236,192
00360	Denver City	10,143,033	109,774	84,572	1,170,465
00362	Deport	83,838	3,557	6,329	9,670
10366	DeSoto	139,038,894	3,702,832	2,387,397	16,085,659
00370	Devine	5,423,418	347,781	120,200	630,739
00371	Diboll	11,096,103	260,779	124,774	1,281,758
00372	Dickens	86,391	2,133	6,020	9,900

Schedule of Changes in Fiduciary Net Position (by Participating City)
For the Year Ended December 31, 2023
CONTINUED

DEDUCTIONS				
Retirement Benefits	Member Account Refunds	Administrative Expenses	Other	Balance at December 31, 2023
1,589,994	70,460	36,006	252	56,007,813
54,851,089	1,272,407	618,910	4,324	923,813,230
84,661	33,603	1,444	10	2,186,790
3,155,714	156,545	42,291	295	63,009,720
7,619	4,026	144	1	324,829
131,439	12,526	2,092	15	3,246,010
		11	0	28,788
191,000	55,254	3,900	27	6,091,632
453,633	59,681	5,667	40	8,326,529
5,025		159	1	252,467
		33	0	81,504
636,298	23,703	8,475	59	12,825,995
89,619	26,943	1,135	8	1,629,910
3,242	2,238	641	4	1,171,171
47,607		1,149	8	1,733,641
4,931	2,721	67	0	130,324
757,805	26,033	17,688	124	27,799,686
7,930		378	3	564,472
217,120	40,967	3,524	25	5,235,070
814,959	64,023	11,809	83	17,808,207
14,640	390	254	2	404,374
153,079	10,862	2,129	15	3,163,530
3,303	32,524	276	2	392,113
664,368	44,963	6,961	49	10,112,378
6,573	10,891	319	2	916,868
455,399	45,511	6,233	44	9,514,893
27,746	4,404	406	3	622,648
13,626	10,104	202	1	292,209
				31,008
624,902	95,148	7,663	54	12,165,657
31,377		539	4	836,231
1,430,717	64,752	21,475	150	32,889,808
7,382,519	100,669	108,001	755	161,151,212
41,531	45,046	834	6	1,259,727
1,846,907	356,255	25,200	176	38,716,408
44,523		269	2	389,868
4,262,257	143,932	50,653	354	74,939,189
25,993,917	738,587	382,866	2,675	583,428,852
592,624	19,793	7,468	52	10,887,907
6,703		62	0	96,628
6,263,300	307,745	102,375	715	154,540,647
301,819	4,341	3,993	28	6,211,957
727,590	45,504	8,170	57	11,982,093
		64	0	104,379

Schedule of Changes in Fiduciary Net Position (by Participating City)
For the Year Ended December 31, 2023
 CONTINUED

City Number	Participating City	Balance at January 1, 2023	ADDITIONS		
			City Contributions	Member Contributions	Net Investment Income
00373	Dickinson	22,704,605	870,344	597,704	2,627,521
00374	Dilley	2,856,067	140,882	108,232	330,164
00376	Dimmitt	5,538,214	46,703	70,055	638,929
00382	Donna	12,515,720	999,387	641,220	1,457,297
00379	Double Oak	1,295,213	82,009	68,998	150,678
00383	Dripping Springs	1,787,828	202,358	206,839	209,050
00385	Driscoll	155,134	5,346	13,168	17,767
00384	Dublin	5,032,674	213,681	117,407	581,158
00386	Dumas	22,064,554	925,191	423,752	2,551,916
00388	Duncanville	115,816,283	1,341,382	1,512,706	13,352,809
00394	Eagle Lake	5,182,881	119,929	76,065	596,769
00396	Eagle Pass	79,250,515	2,133,851	1,188,305	9,159,523
00397	Early	3,265,386	84,489	104,274	376,840
00399	Earth	233,853	7,152	8,534	27,038
00393	East Bernard	144,820	10,455	9,203	16,945
00401	East Mountain	442,866	17,865	8,745	51,328
00395	East Tawakoni	903,824	23,640	29,361	104,557
00398	Eastland	5,516,085	178,713	101,311	636,977
00402	Ector	289,140	2,674	7,958	33,531
00406	Eden	1,385,898	12,725	19,945	159,622
00408	Edgewood	541,773	29,186	25,117	62,959
00410	Edinburg	158,533,159	7,780,692	3,748,438	18,387,560
00412	Edna	8,833,855	187,557	90,433	1,021,409
00414	El Campo	31,033,472	1,012,981	505,408	3,583,911
00416	Eldorado	2,706,085	73,982	50,905	312,277
00418	Electra	2,049,948	16,251	55,653	234,028
00420	Elgin	15,428,195	748,622	422,609	1,789,296
00422	Elkhart	808,675	14,008	20,600	93,106
00427	Elmendorf	500,851	14,652	55,187	58,413
00432	Emory	2,187,109	83,977	87,476	253,447
00436	Ennis	74,457,340	2,838,063	1,143,723	8,614,692
00437	Escobares	24,218	8,716	6,895	2,849
00439	Eules	230,632,476	6,044,874	2,389,279	26,680,739
00440	Eustace	923,919	52,930	35,153	106,713
00441	Everman	7,474,229	312,956	196,088	864,030
00443	Fair Oaks Ranch	11,188,510	630,101	376,340	1,301,500
00442	Fairfield	6,932,447	126,350	129,305	800,098
00445	Fairview	13,607,211	916,920	477,562	1,583,775
20444	Falfurrias	2,891,133	36,192	81,882	332,866
00446	Falls City	407,935	16,811	13,913	47,492
00448	Farmers Branch	270,495,837	8,534,416	2,561,923	31,266,806
00450	Farmersville	6,903,441	250,996	143,920	799,010
00451	Farwell	1,274,292	52,863	19,061	146,761
00452	Fate	6,544,827	646,782	448,709	763,880

Schedule of Changes in Fiduciary Net Position (by Participating City)
For the Year Ended December 31, 2023
CONTINUED

DEDUCTIONS				
Retirement Benefits	Member Account Refunds	Administrative Expenses	Other	Balance at December 31, 2023
1,373,557	77,421	16,717	117	25,332,362
183,281	21,275	2,103	15	3,228,672
288,842	1,900	4,078	28	5,999,054
468,826	111,184	9,215	64	15,024,334
34,413		954	7	1,561,524
6,216		1,316	9	2,398,534
1,264	15,060	114	1	174,976
244,559	11,812	3,706	26	5,684,818
1,156,216	132,624	16,246	114	24,660,213
7,614,355	114,830	85,276	596	124,208,123
245,811	34,285	3,816	27	5,691,705
3,784,820	201,780	58,352	408	87,686,835
114,584	10,734	2,404	17	3,703,251
16,203	49,361	172	1	210,840
4,926		107	1	176,390
10,291		326	2	510,186
50,137	11,028	665	5	999,548
256,031	21,785	4,062	28	6,151,180
11,775		213	1	321,314
79,788	9,165	1,020	7	1,488,209
19,097	12,421	399	3	627,116
7,092,173	785,491	116,728	816	180,454,642
494,377	31,937	6,504	45	9,600,390
1,757,967	87,827	22,850	160	34,266,968
143,651	24,694	1,993	14	2,972,897
119,405	39,857	1,509	11	2,195,097
679,355	92,934	11,360	79	17,604,994
39,095	11,101	595	4	885,594
1,774		369	3	626,958
97,775	15,489	1,610	11	2,497,123
4,105,094	52,702	54,823	383	82,840,816
		18	0	42,659
11,710,824	61,552	169,815	1,186	253,803,990
36,019		680	5	1,082,011
433,915	17,040	5,503	38	8,390,807
366,527	83,280	8,238	58	13,038,348
338,601	37,906	5,104	36	7,606,552
422,406	78,443	10,019	70	16,074,531
132,076	33,740	2,129	15	3,174,114
12,892		300	2	472,957
17,238,704	207,887	199,167	1,392	295,211,832
270,300		5,083	36	7,821,949
47,250	1,046	938	7	1,443,736
93,029	41,986	4,819	34	8,264,331

Schedule of Changes in Fiduciary Net Position (by Participating City)
For the Year Ended December 31, 2023
 CONTINUED

City Number	Participating City	Balance at January 1, 2023	ADDITIONS		
			City Contributions	Member Contributions	Net Investment Income
00454	Fayetteville	172,159	2,782	4,164	19,974
00456	Ferris	4,828,961	280,821	233,693	558,976
00458	Flatonia	5,637,050	138,781	71,479	653,025
00460	Florence	721,758	28,454	31,828	83,625
20462	Floresville	8,536,200	346,920	185,917	989,008
10462	Floresville No. 1	53,675			6,174
00463	Flower Mound	167,536,304	5,744,430	3,648,908	19,412,033
00464	Floydada	5,093,066	108,843	53,990	587,928
00465	Follett	42,449	15,432	4,038	5,007
00468	Forest Hill	25,776,490	738,019	394,060	2,983,725
00470	Forney	34,159,666	2,638,268	1,293,269	3,974,090
00472	Fort Stockton	17,792,393	639,143	337,814	2,057,018
00476	Franklin	841,959	39,520	51,612	97,524
00478	Frankston	645,607	9,307	33,723	74,797
00480	Fredericksburg	52,624,776	3,134,968	992,079	6,096,773
00482	Freeport	29,031,927	1,104,669	547,253	3,358,750
00481	Freer	1,198,342	48,256	35,799	137,165
00483	Friendswood	85,043,388	3,106,763	1,331,742	9,846,822
00484	Friona	5,577,421	124,815	69,963	644,169
00486	Frisco	349,325,307	17,613,608	8,734,633	40,610,685
00487	Fritch	2,706,839	43,334	64,678	311,786
00488	Frost	217,699	2,750	1,414	24,974
00491	Fulshear	4,331,021	498,265	447,162	507,122
00493	Fulton	665,046	31,740	31,168	77,588
00492	Gainesville	50,934,073	2,347,524	858,734	5,900,305
00494	Galena Park	20,069,672	405,193	276,321	2,319,951
00498	Ganado	3,832,812	58,919	34,982	442,960
00499	Garden Ridge	3,817,872	142,139	98,845	442,825
00500	Garland	1,072,746,594	19,450,670	12,572,061	123,942,041
00501	Garrett	34,397	16,194	15,601	4,064
00502	Garrison	2,172,700	21,425	23,581	251,153
00503	Gary	523,590	49,379	12,419	60,721
00504	Gatesville	20,198,060	694,337	333,699	2,338,266
00505	George West	2,041,817	76,872	73,491	234,792
00506	Georgetown	184,272,970	9,021,358	5,171,754	21,385,819
00510	Giddings	16,153,074	601,791	237,728	1,868,332
00512	Gilmer	10,300,348	333,264	151,370	1,191,899
00514	Gladewater	8,335,357	212,003	139,292	962,838
00516	Glen Rose	4,335,669	150,720	72,812	502,241
00517	Glenn Heights	11,183,852	348,630	368,271	1,293,901
00518	Godley	654,319	19,664	55,289	75,716
00519	Goldsmith	578,312	3,983	17,469	67,246
00520	Goldthwaite	5,872,839	193,408	54,525	679,227
00522	Goliad	2,520,978	49,989	67,292	289,839

Schedule of Changes in Fiduciary Net Position (by Participating City)
For the Year Ended December 31, 2023
CONTINUED

DEDUCTIONS				
Retirement Benefits	Member Account Refunds	Administrative Expenses	Other	Balance at December 31, 2023
4,143		127	1	194,809
287,415	15,242	3,556	25	5,596,213
221,947	29,715	4,151	29	6,244,493
57,856	733	531	4	806,540
497,334	46,785	6,285	44	9,507,597
3,350		40	0	56,459
6,639,272	319,265	123,357	862	189,258,919
273,682	9,869	3,750	26	5,556,499
11,319	6,327	31	0	49,247
1,256,729	107,968	18,979	133	28,508,486
780,059	57,978	25,152	176	41,201,930
1,087,057	84,197	13,101	92	19,641,920
20,842	19,221	620	4	989,927
17,262		475	3	745,693
3,282,637	134,178	38,748	271	59,392,763
1,408,923	126,967	21,376	149	32,485,184
52,108	32,090	882	6	1,334,476
4,470,315	68,828	62,618	438	94,726,517
330,926	8,861	4,107	29	6,072,446
9,153,158	571,703	257,209	1,797	406,300,366
52,189	22,434	1,993	14	3,050,009
22,273		160	1	224,402
46,026	28,118	3,189	22	5,706,215
36,070	1,296	490	3	767,683
2,421,916	100,733	37,503	262	57,480,224
847,880	69,610	14,777	103	22,138,765
185,723	5,156	2,822	20	4,175,952
127,628	4,376	2,811	20	4,366,846
64,470,616	1,296,153	789,866	5,519	1,162,149,212
	5,320	25	0	64,910
111,587	1,116	1,600	11	2,354,547
20,520		386	3	625,200
1,208,717	61,252	14,872	104	22,279,417
122,467	38,585	1,503	11	2,264,406
6,263,843	295,487	135,681	948	213,155,943
997,294	48,772	11,894	83	17,802,883
637,045	17,544	7,584	53	11,314,653
412,138	38,354	6,137	43	9,192,818
213,667	9,284	3,192	22	4,835,278
404,617	31,350	8,235	58	12,750,393
65,715		482	3	738,787
10,770		426	3	655,812
389,735	6,543	4,324	30	6,399,365
102,770	42,401	1,856	13	2,781,058

Schedule of Changes in Fiduciary Net Position (by Participating City)
For the Year Ended December 31, 2023
 CONTINUED

City Number	Participating City	Balance at January 1, 2023	ADDITIONS		
			City Contributions	Member Contributions	Net Investment Income
00524	Gonzales	17,940,339	585,264	301,766	2,071,371
00527	Gordon	50,714	5,997	12,443	5,957
00530	Gorman	211,789	16,226	9,178	24,831
00532	Graford	165,329	2,652	6,543	19,225
10534	Graham	17,341,201	457,853	223,562	2,000,249
20534	Graham Regional Medical Ctr.	18,552,395			2,118,070
00536	Granbury	46,358,926	2,351,567	967,724	5,372,763
00540	Grand Prairie	679,943,825	22,049,856	8,896,983	78,836,258
00542	Grand Saline	3,578,557	110,978	88,278	413,633
00544	Grandview	2,283,418	159,868	95,976	264,664
00546	Granger	762,348	39,530	37,854	88,444
00547	Granite Shoals	2,638,265	179,785	201,038	306,658
00548	Grapeland	717,520	22,499	30,127	82,492
00550	Grapevine	296,463,155	10,135,547	3,738,084	34,316,178
00552	Greenville	122,487,143	4,008,823	1,778,313	14,140,910
00551	Gregory	803,325	32,227	37,127	92,598
00553	Grey Forest	15,382,645	424,086	179,915	1,780,764
00556	Groesbeck	2,073,743	36,708	80,500	240,479
00558	Groom	389,997	4,100	6,700	45,103
00559	Groves	42,243,458	543,433	426,780	4,875,086
00560	Groveton	302,781	2,366	10,029	35,054
00562	Gruver	1,546,089	35,943	19,001	178,929
00563	Gun Barrel City	4,732,518	269,030	187,576	546,945
00564	Gunter	700,576	145,968	70,081	81,477
00568	Hale Center	561,123	36,060	30,507	64,897
00570	Hallettsville	8,428,162	206,955	81,032	975,217
00572	Hallsville	868,097	65,936	76,416	99,771
00574	Haltom City	122,604,263	4,320,011	1,581,594	14,190,108
00576	Hamilton	4,441,041	193,915	90,614	513,901
00578	Hamlin	2,828,962	34,935	42,953	325,711
00580	Happy	755,716	10,423	11,864	86,961
00581	Harker Heights	57,647,537	2,245,961	1,032,965	6,680,422
10582	Harlingen	97,335,578	2,320,697	1,938,533	11,233,399
20582	Harlingen Waterworks System	25,802,008	702,709	523,294	2,976,359
00583	Hart	211,821	6,931	7,909	24,639
00586	Haskell	2,247,895		71,325	259,520
00587	Haslet	4,494,976	184,487	155,967	522,756
00588	Hawkins	2,571,718	37,107	39,119	297,804
00585	Hays	176,204	357		20,339
00590	Hearne	9,226,923	373,366	178,158	1,068,234
00591	Heath	14,389,800	666,384	381,726	1,670,426
00592	Hedley	224,698			25,910
00595	Hedwig Village	6,292,706	208,169	176,201	728,301
00593	Helotes	9,278,886	314,488	325,653	1,075,712

Schedule of Changes in Fiduciary Net Position (by Participating City)
For the Year Ended December 31, 2023
CONTINUED

DEDUCTIONS				
Retirement Benefits	Member Account Refunds	Administrative Expenses	Other	Balance at December 31, 2023
895,755	57,417	13,210	92	19,932,266
1,286	3,239	37	0	70,549
4,071		156	1	257,795
31,116		122	1	162,511
1,128,068		12,768	89	18,881,939
1,073,505	7,390	13,660	95	19,575,814
2,391,498	111,426	34,134	238	52,513,682
32,387,416	824,225	500,644	3,498	756,011,139
190,177	24,134	2,635	18	3,974,481
84,622	10,249	1,681	12	2,707,362
37,376		561	4	890,235
58,432	13,821	1,943	14	3,251,537
54,426	5,097	528	4	792,584
16,335,848	340,067	218,287	1,525	327,757,237
8,563,307	291,508	90,188	630	133,469,557
41,952	2,720	591	4	920,010
1,175,603	4,929	11,326	79	16,575,474
104,121	2,256	1,527	11	2,323,516
22,138		287	2	423,473
2,585,380	76,000	31,104	217	45,396,057
6,848	4,283	223	2	338,875
47,822		1,138	8	1,730,994
161,360	78,900	3,485	24	5,492,301
28,146	19,129	516	4	950,308
18,601	4,520	413	3	669,050
624,403	13,355	6,206	43	9,047,359
26,603	398	639	4	1,082,576
6,116,873	75,925	90,274	631	136,412,273
293,291	44,110	3,270	23	4,898,777
254,428	25,728	2,083	15	2,950,309
22,283		556	4	842,122
2,606,466	151,262	42,446	297	64,806,414
6,445,179	84,701	71,668	501	106,226,158
2,035,229	148,572	18,998	133	27,801,439
1,316	34,787	156	1	215,039
93,799	54,842	1,655	12	2,428,434
94,711		3,310	23	5,260,142
83,292	2,192	1,894	13	2,858,357
11,990		130	1	184,780
464,797	134,052	6,794	47	10,240,989
604,142		10,595	74	16,493,524
	7,368	165	1	243,073
317,755	22,109	4,633	32	7,060,848
276,052	16,081	6,832	48	10,695,726

Schedule of Changes in Fiduciary Net Position (by Participating City)
For the Year Ended December 31, 2023
CONTINUED

City Number	Participating City	Balance at January 1, 2023	ADDITIONS		
			City Contributions	Member Contributions	Net Investment Income
00594	Hemphill	3,396,988	87,398	61,204	393,884
00596	Hempstead	13,262,094	341,871	246,305	1,533,396
00598	Henderson	34,476,393	1,400,988	601,283	3,990,122
00600	Henrietta	3,094,116	119,774	55,268	357,234
00602	Hereford	23,113,215	572,014	303,298	2,673,540
00605	Hewitt	22,389,132	1,112,328	485,128	2,596,635
00609	Hickory Creek	4,651,794	283,563	129,481	540,012
00606	Hico	1,443,065	64,867	51,717	167,121
00607	Hidalgo	24,061,691	844,872	505,480	2,785,844
00608	Higgins	364,101	2,959	3,753	41,994
00603	Highland Haven		992	626	-
00610	Highland Park	83,727,754	2,098,680	1,083,896	9,661,045
00611	Highland Village	51,198,566	1,600,000	814,546	5,937,130
00613	Hill Country Village	2,619,216	43,858	50,879	303,478
00612	Hillsboro	22,153,261	880,850	354,609	2,563,684
00619	Hilshire Village	202,036	8,290	6,643	23,640
00614	Hitchcock	5,016,020	213,103	205,837	579,041
00615	Holland	659,094	16,435	25,415	76,256
00616	Holliday	1,006,502	52,863	30,557	116,883
00617	Hollywood Park	7,291,740	381,200	161,754	844,348
00618	Hondo	17,053,814	697,837	389,232	1,970,791
00620	Honey Grove	1,872,197	56,895	31,928	216,510
00622	Hooks	1,636,008	94,028	46,839	189,661
00623	Horizon City	1,817,315	257,078	231,185	213,353
00621	Horseshoe Bay	45,000	661,409	557,144	5,316
00626	Howe	2,870,266	77,067	52,074	332,314
00627	Hubbard	676,228	16,943	34,460	78,431
00628	Hudson	1,242,001	31,990	40,494	143,733
00629	Hudson Oaks	5,673,234	238,008	135,232	658,615
00630	Hughes Springs	5,686,376	59,336	51,278	658,497
00632	Humble	85,307,092	2,408,357	1,279,097	9,878,926
00633	Hunters Creek Village	1,511,605	124,968	44,181	175,579
00634	Huntington	3,904,198	147,644	68,631	451,987
00636	Huntsville	85,894,849	3,375,382	1,219,808	9,934,017
00637	Hurst	170,086,337	3,557,966	2,046,887	19,637,164
00638	Hutchins	11,195,781	444,392	410,388	1,297,553
00640	Hutto	23,737,264	1,386,279	803,308	2,759,906
00641	Huxley	1,086,123	17,825	23,946	125,092
00642	Idalou	851,375	28,159	33,522	98,324
00643	Ingleside	14,356,931	434,109	273,025	1,662,276
00646	Ingram	1,000,426	27,691	23,192	115,739
00647	Iowa Colony	927,864	194,145	125,718	108,637
00644	Iowa Park	9,640,305	211,883	137,586	1,116,044
00645	Iraan	1,469,324	71,183	28,009	169,825

Schedule of Changes in Fiduciary Net Position (by Participating City)
For the Year Ended December 31, 2023
CONTINUED

DEDUCTIONS				
Retirement Benefits	Member Account Refunds	Administrative Expenses	Other	Balance at December 31, 2023
281,495	1,891	2,501	17	3,653,569
828,198	69,062	9,765	68	14,476,572
1,857,517	65,072	25,385	177	38,520,634
147,314	355	2,278	16	3,476,429
1,191,244	25,857	17,018	119	25,427,829
1,083,029	117,925	16,485	115	25,365,668
87,400	31,029	3,425	24	5,482,972
73,529	1,611	1,063	7	1,650,560
901,191	87,689	17,717	124	27,191,165
28,773		268	2	383,764
				1,618
6,735,930	19,524	61,649	431	89,753,842
1,660,002	31,029	37,698	263	57,821,250
91,597	2,839	1,929	13	2,921,053
889,034	19,838	16,312	114	25,027,107
42,419		149	1	198,040
303,163	38,835	3,693	26	5,668,283
33,596		485	3	743,115
70,098	5,879	741	5	1,130,082
413,410	10,359	5,369	38	8,249,866
927,896	52,687	12,557	88	19,118,448
84,580	10,031	1,379	10	2,081,532
93,096	7,525	1,205	8	1,864,701
51,537	36,613	1,338	9	2,429,433
14,318		33	0	1,254,518
161,434	36,316	2,113	15	3,131,843
24,390		498	3	781,171
46,633	22,516	914	6	1,388,148
227,711	20,499	4,177	29	6,452,673
367,265		4,187	29	6,084,006
4,427,127	115,679	62,812	439	94,267,416
67,052		1,113	8	1,788,161
239,842	13,587	2,875	20	4,316,136
5,255,411	185,886	63,245	442	94,919,072
12,135,942	149,245	125,235	875	182,917,057
279,208	20,595	8,243	58	13,040,011
613,364	135,114	17,478	122	27,920,679
42,368		800	6	1,209,813
9,589	5,708	627	4	995,452
821,248	52,364	10,571	74	15,842,085
52,606	19,728	737	5	1,093,972
68,370	19,724	683	5	1,267,583
412,979	39,591	7,098	50	10,646,100
55,375		1,082	8	1,681,877

Schedule of Changes in Fiduciary Net Position (by Participating City)
For the Year Ended December 31, 2023
 CONTINUED

City Number	Participating City	Balance at January 1, 2023	ADDITIONS		
			City Contributions	Member Contributions	Net Investment Income
00648	Irving	857,368,146	13,006,274	9,407,487	99,223,646
00650	Italy	649,156	75,134	60,451	74,506
00652	Itasca	2,647,617	83,004	64,178	306,353
00654	Jacinto City	11,616,589	561,309	212,886	1,346,568
00656	Jacksboro	7,381,167	295,325	151,782	851,665
00658	Jacksonville	31,815,336	791,648	480,759	3,676,983
00661	Jarrell		57,868	59,381	-
00660	Jasper	28,109,095	599,825	507,711	3,244,546
00664	Jefferson	2,126,701	1,493	41,466	244,129
00665	Jersey Village	26,881,663	1,198,647	589,829	3,112,906
00666	Jewett	1,175,284	41,291	19,948	135,727
00668	Joaquin	279,986	6,346	6,114	32,366
00670	Johnson City	2,387,661	83,608	58,061	275,853
00673	Jones Creek	565,386	22,909	22,637	65,581
00675	Jonestown	2,421,794	144,408	133,358	281,456
00677	Josephine	1,023,398	137,487	97,278	119,487
00671	Joshua	4,867,310	217,100	271,376	564,053
00672	Jourdanton	3,507,180	74,221	68,724	405,832
00674	Junction	4,498,464	177,875	83,678	518,108
00676	Justin	3,409,286	287,280	276,993	396,422
00678	Karnes City	3,211,412	130,867	77,623	372,168
00680	Katy	62,109,038	2,738,973	1,414,967	7,205,494
00682	Kaufman	15,689,927	608,172	323,251	1,817,012
00683	Keene	10,817,213	388,006	218,683	1,251,395
00681	Keller	109,761,421	3,584,515	1,577,097	12,715,148
00685	Kemah	6,452,004	155,550	182,388	748,365
00684	Kemp	1,406,849	90,365	64,349	161,816
00689	Kempner	19,514	2,036	8,777	2,304
00686	Kenedy	3,787,081	278,292	143,154	438,063
00688	Kennedale	19,585,177	740,399	360,668	2,271,207
00690	Kerens	450,413	69,004	32,729	52,780
00692	Kermit	12,697,850	498,891	219,776	1,467,093
10694	Kerrville	90,293,992	2,287,537	1,580,727	10,438,227
20694	Kerrville Public Utility	31,267,907	615,194	349,758	3,618,230
10696	Kilgore	46,367,414	1,344,517	656,778	5,354,113
00698	Killeen	201,009,742	8,340,278	4,062,769	23,236,487
00700	Kingsville	69,074,464	1,181,793	985,029	7,982,551
00701	Kirby	9,784,442	315,564	153,934	1,129,393
00702	Kirbyville	1,978,996	57,844	54,161	227,479
00704	Knox City	832,135	8,904	19,357	96,152
00706	Kosse	86,434	4,702	15,539	10,145
00708	Kountze	1,250,462	56,151	66,373	141,919
00709	Kress	333,701		648	38,424
00699	Krugerville	1,103,214	60,618	56,957	128,842

Schedule of Changes in Fiduciary Net Position (by Participating City)
For the Year Ended December 31, 2023
CONTINUED

DEDUCTIONS				
Retirement Benefits	Member Account Refunds	Administrative Expenses	Other	Balance at December 31, 2023
46,729,554	578,169	631,282	4,411	931,062,136
36,202		478	3	822,564
103,495	5,546	1,949	14	2,990,148
352,185	48,707	8,553	60	13,327,847
405,745	45,992	5,435	38	8,222,729
1,581,606	82,330	23,426	164	35,077,202
				117,249
1,885,723	84,453	20,697	145	30,470,159
96,586	8,432	1,566	11	2,307,195
1,335,025	194,708	19,793	138	30,233,379
73,097		865	6	1,298,283
23,828	10,553	206	1	290,222
85,073	43,316	1,758	12	2,675,023
28,058	7,023	416	3	641,013
84,219	16,109	1,783	12	2,878,893
1,948	14,711	754	5	1,360,232
143,842	122,380	3,584	25	5,650,009
197,831	15,349	2,582	18	3,840,175
182,817	13,768	3,312	23	5,078,204
78,648	50,334	2,510	18	4,238,471
83,546	2,260	2,365	17	3,703,882
2,450,842	103,748	45,731	320	70,867,831
749,769	83,197	11,553	81	17,593,763
522,775	26,077	7,965	56	12,118,424
5,451,235	169,755	80,818	565	121,935,808
259,522	83,048	4,751	33	7,190,953
45,671	4,014	1,036	7	1,672,652
		14	0	32,617
127,783	12,825	2,788	19	4,503,174
801,812	18,215	14,421	101	22,122,902
23,037		332	2	581,556
896,567	68,678	9,349	65	13,908,950
4,621,513	328,472	66,484	465	99,583,550
1,163,101	4,109	23,023	161	34,660,694
2,729,475	127,848	34,140	239	50,831,121
13,767,472	767,848	148,004	1,034	221,964,918
3,462,382	250,365	50,860	355	75,459,875
464,782	73,940	7,204	50	10,837,356
107,609	22,027	1,457	10	2,187,377
46,847		613	4	909,084
941		64	0	115,815
112,941	5,541	921	6	1,395,497
18,702		246	2	353,822
9,075		812	6	1,339,737

Schedule of Changes in Fiduciary Net Position (by Participating City)
For the Year Ended December 31, 2023
 CONTINUED

City Number	Participating City	Balance at January 1, 2023	ADDITIONS		
			City Contributions	Member Contributions	Net Investment Income
00707	Krum	3,978,439	248,603	277,105	461,497
00710	Kyle	35,192,468	2,940,487	1,587,002	4,091,190
00725	La Coste	530,630	5,846	22,631	61,450
00714	La Feria	7,419,141	389,685	180,889	858,244
00716	La Grange	17,596,083	465,434	232,551	2,036,871
00723	La Grulla	1,096,757	37,153	39,287	126,934
00732	La Joya	1,157,786	117,493	103,427	131,663
00721	La Marque	31,649,484	1,397,249	701,128	3,662,957
00728	La Porte	173,983,522	4,566,169	2,000,152	20,120,660
00731	La Vernia	870,837	63,805	86,390	100,408
00711	Lacy-Lakeview	9,412,657	377,031	201,621	1,091,860
00712	Ladonia	153,989	1,599	3,530	17,608
00713	Lago Vista	13,232,388	514,293	391,593	1,531,481
00705	Laguna Vista	1,158,718	45,636	54,200	132,803
00717	Lake Dallas	10,196,643	306,537	146,669	1,179,634
00718	Lake Jackson	71,375,068	1,595,927	856,490	8,243,667
00719	Lake Worth	24,837,805	1,301,665	547,905	2,881,853
00727	Lakeport	533,563	183	10,161	61,913
00715	Lakeside	2,110,324	111,052	72,380	245,557
00729	Lakeside City	292,832	10,013	9,558	34,028
00720	Lakeway	26,503,778	1,357,940	658,733	3,076,834
00722	Lamesa	17,137,375	164,389	300,449	1,972,825
00724	Lampasas	28,255,863	1,079,711	482,321	3,272,862
00726	Lancaster	88,742,074	3,129,670	1,602,611	10,269,950
00730	Laredo	652,458,657	30,479,121	10,247,549	75,634,276
00733	Lavon	2,139,138	432,433	164,245	249,078
00736	League City	165,451,194	6,314,642	3,052,660	19,174,077
00737	Leander	54,222,657	3,816,565	2,224,477	6,319,157
00735	Lefors	111,840	19,037	10,940	13,080
00739	Leon Valley	44,845,930	1,459,012	550,740	5,181,021
00738	Leonard	1,117,531	37,278	66,398	128,940
00740	Levelland	31,252,961	478,388	319,992	3,613,682
00742	Lewisville	334,538,003	12,293,491	5,131,454	38,734,137
00744	Lexington	1,873,158	43,891	32,593	215,749
00746	Liberty	15,468,561	857,670	412,909	1,791,973
00745	Liberty Hill	2,903,934	315,146	354,095	340,150
00748	Lindale	8,641,828	527,405	210,122	1,003,567
00750	Linden	1,052,046	6,283	44,244	121,656
00749	Lindsay	65,397	9,700	9,938	7,690
00755	Lipan	260,786	2,730	10,262	30,332
00751	Little Elm	53,731,166	3,640,169	1,918,764	6,251,201
00759	Little River-Academy		4,709	5,411	-
00752	Littlefield	9,503,044	171,723	132,502	1,097,619
00753	Live Oak	46,966,132	1,532,688	598,039	5,444,892

Schedule of Changes in Fiduciary Net Position (by Participating City)
For the Year Ended December 31, 2023
CONTINUED

DEDUCTIONS				
Retirement Benefits	Member Account Refunds	Administrative Expenses	Other	Balance at December 31, 2023
170,012	53,165	2,929	20	4,739,517
741,713	161,593	25,912	181	42,881,748
15,965	454	391	3	603,746
433,286	55,094	5,463	38	8,354,078
1,133,221	4,138	12,956	91	19,180,533
33,262	14,072	808	6	1,251,984
116,309	46,017	852	6	1,347,184
1,543,366	109,154	23,304	163	35,734,832
9,665,118	300,089	128,104	895	190,576,298
30,392	24,221	641	4	1,066,182
596,873	60,589	6,931	48	10,418,728
2,953	4,363	113	1	169,296
641,525	31,833	9,743	68	14,986,587
22,598	14,199	853	6	1,353,701
506,870	39,768	7,508	52	11,275,284
3,444,046	102,794	52,554	367	78,471,391
1,072,948	33,160	18,288	128	28,444,704
1,879	13,636	393	3	589,909
73,482	20,924	1,554	11	2,443,342
5,499	8,277	216	2	332,438
1,038,178	85,948	19,515	136	30,453,508
1,282,622	187,115	12,618	88	18,092,594
1,235,386	56,699	20,805	145	31,777,721
4,931,350	156,231	65,341	457	98,590,926
36,587,541	1,065,882	480,407	3,357	730,682,417
30,217		1,575	11	2,953,091
8,149,810	365,956	121,822	851	185,354,135
1,350,820	334,029	39,924	279	64,857,804
3,065	2,014	82	1	149,735
2,618,761	74,203	33,020	231	49,310,489
36,798	28,995	823	6	1,283,525
2,043,012	95,963	23,012	161	33,502,875
17,696,071	399,551	246,321	1,721	372,353,421
130,532		1,379	10	2,033,469
861,156	142,575	11,390	80	17,515,914
51,908	26,702	2,138	15	3,832,562
458,706	7,288	6,363	44	9,910,520
43,731	770	775	5	1,178,947
		48	0	92,676
5,396	34,883	192	1	263,638
1,558,120	69,490	39,562	276	63,873,850
				10,120
387,266	12,598	6,997	49	10,497,979
2,198,424	174,245	34,581	242	52,134,259

Schedule of Changes in Fiduciary Net Position (by Participating City)
For the Year Ended December 31, 2023
 CONTINUED

City Number	Participating City	Balance at January 1, 2023	ADDITIONS		
			City Contributions	Member Contributions	Net Investment Income
00757	Liverpool	161,317	4,485	12,741	18,640
00754	Livingston	29,334,465	843,608	383,439	3,393,836
00756	Llano	8,468,605	347,435	195,975	981,088
00758	Lockhart	35,016,012	958,429	455,310	4,048,327
00760	Lockney	970,226	17,785	19,761	112,277
00761	Log Cabin	12,903	23,601	24,806	1,524
00764	Lone Oak	59,674	22,530	21,376	7,050
00765	Lone Star	1,679,590	7,931	17,703	193,759
00766	Longview	187,439,621	4,605,195	2,666,400	21,640,245
00768	Loraine	151,705	3,466	7,772	17,585
00769	Lorena	2,193,439	93,094	55,085	253,840
00770	Lorenzo	665,697	7,863	12,521	76,121
00771	Los Fresnos	5,534,372	191,390	143,687	641,508
00772	Los Indios	6,401	15,339	21,389	756
00773	Lott	334,704	1,924	5,229	37,127
00774	Lovelady	174,288	12,233	9,798	19,925
00777	Lowry Crossing		8,197	1,585	-
00778	Lubbock	712,470,636	22,135,983	9,109,458	82,313,890
00779	Lucas	6,306,763	443,262	257,924	734,551
00782	Lufkin	100,049,105	3,006,505	1,315,347	11,562,678
00784	Luling	11,285,610	264,370	221,046	1,305,714
00785	Lumberton	11,985,735	428,505	195,664	1,390,428
00786	Lyford	673,586	21,451	21,454	78,155
00787	Lytle	4,452,544	164,205	80,100	516,391
00790	Madisonville	5,024,085	147,781	98,521	582,060
00791	Magnolia	2,291,380	119,142	156,766	265,322
00792	Malakoff	3,138,432	72,594	93,239	363,907
00796	Manor	6,434,302	519,191	445,384	748,832
00798	Mansfield	193,956,699	8,242,073	3,438,291	22,488,065
00799	Manvel	5,630,412	636,332	454,523	656,007
00800	Marble Falls	28,056,011	1,404,275	717,563	3,245,111
00802	Marfa	3,993,905	59,329	103,361	461,109
00804	Marion	1,295,470	22,716	26,851	150,013
00806	Marlin	5,891,345	223,528	130,718	679,474
00808	Marquez	87,057	18,163	4,610	10,227
00810	Marshall	56,791,466	1,505,286	673,292	6,556,893
00812	Mart	1,881,466	14,168	29,640	217,469
00813	Martindale	302,778	29,189	12,647	35,329
00814	Mason	3,784,859	96,193	77,202	437,788
00816	Matador	237,260	2,257	4,950	27,486
00818	Mathis	4,590,078	106,465	171,717	528,009
00820	Maud	208,621	11,636	12,648	24,328
00822	Maypearl	308,819	2,637	18,569	35,283
00824	McAllen	312,082,857	7,457,116	6,105,246	36,095,732

Schedule of Changes in Fiduciary Net Position (by Participating City)
For the Year Ended December 31, 2023
CONTINUED

DEDUCTIONS				
Retirement Benefits	Member Account Refunds	Administrative Expenses	Other	Balance at December 31, 2023
7,303		119	1	189,761
1,720,620	8,588	21,599	151	32,204,391
631,613	23,383	6,235	44	9,331,828
2,041,953	119,017	25,782	180	38,291,146
20,832	33,372	714	5	1,065,127
	1,457	10	0	61,369
		44	0	110,586
107,903	12,292	1,237	9	1,777,543
12,289,072	610,415	138,012	964	203,312,997
3,598	1,791	112	1	175,028
85,345	36,980	1,615	11	2,471,507
19,047	1,643	490	3	741,018
121,574	144,985	4,075	28	6,240,295
		5	0	43,879
2,937	384	246	2	375,414
4,179		128	1	211,936
				9,782
43,312,925	1,532,808	524,594	3,665	780,655,975
99,998	2,360	4,644	32	7,635,467
6,289,309	258,608	73,666	515	109,311,537
466,636	99,583	8,310	58	12,502,154
516,410	12,704	8,825	62	13,462,330
47,300	45,750	496	3	701,096
233,852	22,673	3,278	23	4,953,414
192,928	15,127	3,699	26	5,640,667
83,685	22,327	1,687	12	2,724,898
169,679	37,189	2,311	16	3,458,977
240,648	19,125	4,738	33	7,883,165
9,732,591	239,123	142,811	998	218,009,606
162,499	63,260	4,146	29	7,147,341
1,427,440	52,283	20,658	144	31,922,434
145,603	15,637	2,941	21	4,453,502
64,323	21,744	954	7	1,408,022
262,554	70,251	4,338	30	6,587,893
4,575		64	0	115,416
4,073,833	247,028	41,816	292	61,163,968
64,969	33,216	1,385	10	2,043,162
7,188		223	2	372,531
218,389	39,347	2,787	19	4,135,499
43,176	7,861	175	1	220,740
161,564	26,425	3,380	24	5,204,877
16,357		154	1	240,722
25,220	1,276	227	2	338,583
14,763,875	1,280,202	229,787	1,606	345,465,482

Schedule of Changes in Fiduciary Net Position (by Participating City)
For the Year Ended December 31, 2023
 CONTINUED

City Number	Participating City	Balance at January 1, 2023	ADDITIONS		
			City Contributions	Member Contributions	Net Investment Income
00826	McCamey	2,202,476	15,017	46,512	254,084
00828	McGregor	9,359,061	406,195	226,744	1,084,982
00830	McKinney	361,721,705	17,156,776	7,952,030	41,997,798
00832	McLean	610,290	6,171	13,016	70,769
00833	McLendon	402,310	70,396	67,227	47,193
00834	Meadow	96,845	5,377	6,297	11,329
00831	Meadowlakes	989,004	22,803	72,226	112,893
00835	Meadows Place	8,300,232	329,979	192,971	960,106
00837	Melissa	8,548,445	1,133,312	454,363	997,946
01501	Memorial Village Police	13,715,396	457,382	293,462	1,582,329
00840	Memphis	3,021,537	68,754	46,681	349,470
00842	Menard	2,012,674		16,283	231,300
00844	Mercedes	21,828,327	879,170	392,988	2,527,977
00846	Meridian	1,142,950	19,609	30,167	132,609
00848	Merkel	1,861,278	89,743	49,002	215,630
00852	Mertzson	356,279	21,508	10,174	40,545
00854	Mesquite	496,880,631	18,446,723	6,456,355	57,385,013
00856	Mexia	19,769,778	417,835	264,692	2,286,893
00858	Miami	199,277	10,950	5,737	23,323
00860	Midland	326,902,369	8,771,112	4,260,777	37,708,884
00862	Midlothian	61,043,067	3,831,571	1,776,224	7,091,228
00863	Milano	42,268	4,708	2,024	4,947
00864	Miles	412,255	1,265	13,461	47,684
00865	Milford	805,102	24,648	20,299	92,876
00868	Mineola	8,524,737	281,398	195,028	985,425
00870	Mineral Wells	36,523,328	859,963	540,859	4,218,970
00874	Mission	112,525,061	3,231,142	2,873,954	13,033,829
00875	Missouri City	123,288,146	3,641,206	2,171,078	14,251,499
00876	Monahans	15,603,176	286,753	214,636	1,801,707
00887	Mont Belvieu	27,826,146	2,069,523	1,069,915	3,233,530
00877	Montgomery	2,687,247	247,374	172,472	309,839
00878	Moody	895,585	10,548	25,854	103,322
00883	Morgan's Point	5,326,538	123,281	85,697	616,259
00882	Morgan's Point Resort	4,802,510	237,825	138,156	557,207
00884	Morton	2,849,991	10,596	19,335	329,220
00886	Moulton	2,542,175	78,637	34,744	292,889
00890	Mount Enterprise	211,084	7,262	9,012	24,366
00892	Mt. Pleasant	44,397,734	1,940,675	893,144	5,147,156
00894	Mt. Vernon	4,392,425	105,610	83,345	508,465
00896	Muenster	2,041,082	19,506	39,727	234,710
00898	Muleshoe	9,916,430	311,737	104,912	1,145,445
00901	Munday	387,034	11,698	15,515	44,990
00903	Murphy	28,142,439	1,244,499	623,139	3,270,513
00899	Mustang Ridge	53,891	30,407	30,964	6,367

Schedule of Changes in Fiduciary Net Position (by Participating City)
For the Year Ended December 31, 2023
CONTINUED

DEDUCTIONS				
Retirement Benefits	Member Account Refunds	Administrative Expenses	Other	Balance at December 31, 2023
84,156	15,151	1,622	11	2,417,148
368,616	29,067	6,891	48	10,672,359
11,909,546	535,955	266,337	1,861	416,114,610
18,271		449	3	681,523
9,660		296	2	577,168
1,508		71	1	118,268
11,677	68,576	728	5	1,115,940
548,808	1,222	6,111	43	9,227,104
263,500	26,229	6,294	44	10,837,998
1,041,111	2,116	10,099	71	14,995,173
134,269	11,084	2,225	16	3,338,849
101,013	12,945	1,482	10	2,144,808
1,325,313	170,112	16,072	112	24,116,853
103,368	2,051	842	6	1,219,069
126,008	23,510	1,370	10	2,064,756
25,659		262	2	402,583
35,535,511	515,231	365,854	2,556	542,749,570
745,588	65,760	14,557	102	21,913,191
16,030	1,016	147	1	222,093
20,116,327	789,271	240,699	1,682	356,495,162
2,253,161	79,774	44,946	314	71,363,895
		31	0	53,916
3,334		304	2	471,025
61,815		593	4	880,513
444,497	30,095	6,277	44	9,505,675
1,959,878	88,577	26,892	188	40,067,585
4,792,959	279,012	82,852	579	126,508,583
7,446,516	276,932	90,777	634	135,537,069
662,777	147,990	11,489	80	17,083,937
1,281,275	215,524	20,488	143	32,681,682
90,707	1,035	1,979	14	3,323,197
56,416	21,350	659	5	956,880
389,894		3,922	27	5,757,931
167,378	10,783	3,536	25	5,553,976
102,387		2,098	15	3,104,642
98,235	4,892	1,872	13	2,843,432
18,246		155	1	233,322
1,559,097	71,065	32,690	228	50,715,629
245,980	20,306	3,234	23	4,820,302
94,852		1,503	11	2,238,659
559,258	14,710	7,301	51	10,897,203
16,882	21,544	285	2	420,524
946,875	34,281	20,721	145	32,278,569
		40	0	121,589

Schedule of Changes in Fiduciary Net Position (by Participating City)
For the Year Ended December 31, 2023
CONTINUED

City Number	Participating City	Balance at January 1, 2023	ADDITIONS		
			City Contributions	Member Contributions	Net Investment Income
10904	Nacogdoches	104,266,016	2,764,055	1,355,304	12,049,582
00906	Naples	620,961	3,076	13,219	71,571
00907	Nash	3,422,328	276,434	101,099	398,364
00905	Nassau Bay	11,418,192	325,183	213,335	1,325,725
00909	Natalia	459,547	10,324	24,464	52,617
00908	Navasota	15,052,229	318,117	267,776	1,737,899
00910	Nederland	64,512,941	726,927	709,692	7,441,350
00912	Needville	3,514,845	39,998	77,991	406,247
00927	Nevada		8,045	5,800	-
00914	New Boston	4,728,816	142,434	117,909	544,486
10916	New Braunfels	183,831,265	9,745,456	3,973,033	21,331,522
20916	New Braunfels Utilities	100,490,012	5,769,106	2,231,146	11,648,442
00915	New Deal	444,317	764	10,613	51,230
00923	New Fairview	245,668	22,166	25,354	28,725
00918	New London	1,359,223	8,334	14,320	157,424
00919	New Summerfield	852,907	44,059	39,693	99,102
00917	New Waverly	886,949	45,737	15,536	102,800
00913	Newark	123,910	4,829	20,462	14,480
00920	Newton	6,720,633	299,797	107,564	778,948
00922	Nixon	1,194,054	21,709	51,043	136,950
00924	Nocona	3,261,709	114,066	54,630	377,365
00925	Nolanville	478,809	57,897	58,839	55,774
00928	Normangee	377,831	15,148	19,223	43,700
00931	North Richland Hills	273,020,320	7,537,419	3,069,337	31,577,919
00930	Northlake	5,614,198	1,471,176	346,818	655,067
00936	Oak Point	3,788,578	274,534	224,765	439,260
00937	Oak Ridge North	11,974,066	348,257	208,716	1,387,153
00942	Odem	1,120,994	46,446	36,578	129,656
00944	Odessa	268,019,302	6,595,402	3,381,353	30,945,354
00935	O'Donnell	248,590	8,212	9,186	28,744
00945	Oglesby	82,831	433	1,145	9,542
00949	Old River-Winfree	97,181		2,251	11,276
00950	Olmos Park	6,714,753	54,003	114,409	775,177
00951	Olney	1,690,731	79,865	85,447	195,682
00953	Omaha	340,213	12,511	12,099	39,517
00954	Onalaska	537,382	69,379	49,799	62,151
00958	Orange	75,978,743	1,686,897	793,567	8,779,634
00960	Orange Grove	1,542,069	44,415	33,733	177,439
00957	Orchard	11,211	4,893	2,780	1,325
00959	Ore City	494,990	3,321	14,564	56,519
00962	Overton	1,958,691	37,099	55,928	226,132
00961	Ovilla	4,316,479	200,100	132,768	500,554
00963	Oyster Creek	3,630,977	109,868	78,096	420,429
00964	Paducah	1,455,441	4,759	19,344	167,511

Schedule of Changes in Fiduciary Net Position (by Participating City)
For the Year Ended December 31, 2023
CONTINUED

DEDUCTIONS				
Retirement Benefits	Member Account Refunds	Administrative Expenses	Other	Balance at December 31, 2023
6,267,035	158,881	76,771	536	113,931,732
34,889	1,274	457	3	672,204
106,343	6,642	2,520	18	4,082,702
419,270	18,961	8,407	59	12,835,737
10,805	8,661	338	2	527,145
568,771	54,879	11,083	77	16,741,211
4,434,947	45,239	47,501	332	68,862,891
127,525		2,588	18	3,908,951
				13,844
236,342	6,990	3,482	24	5,286,807
7,305,077	154,487	135,355	946	211,285,411
5,235,645	69,494	73,991	517	114,759,059
24,349		327	2	482,246
1,478		181	1	320,253
44,315		1,001	7	1,493,978
12,120	21,397	628	4	1,001,611
31,948		653	5	1,018,416
2,645		91	1	160,944
227,413		4,948	35	7,674,546
34,223	31,245	879	6	1,337,403
110,091	3,453	2,402	17	3,691,807
3,452	28,912	353	2	618,599
12,754	1,883	278	2	440,986
14,106,501	277,880	201,026	1,405	300,618,183
40,359	51,452	4,134	29	7,991,286
120,239	23,141	2,790	19	4,580,948
484,235	10,514	8,817	62	13,414,565
80,468	73,672	825	6	1,178,703
17,396,019	683,107	197,343	1,379	290,663,563
24,950	16,726	183	1	252,872
6,906		61	0	86,985
		72	1	110,637
284,479	55,682	4,944	35	7,313,203
105,827	14,066	1,245	9	1,930,577
12,368	4,278	251	2	387,442
1,685	11,085	396	3	705,542
4,422,758	22,589	55,943	391	82,737,159
60,400	2,472	1,135	8	1,733,641
		8	0	20,201
24,803	34,652	364	3	509,572
86,545	36,091	1,442	10	2,153,763
238,693	39,877	3,178	22	4,868,131
264,181	48,433	2,674	19	3,924,064
85,050		1,072	7	1,560,927

Schedule of Changes in Fiduciary Net Position (by Participating City)
For the Year Ended December 31, 2023
 CONTINUED

City Number	Participating City	Balance at January 1, 2023	ADDITIONS		
			City Contributions	Member Contributions	Net Investment Income
00966	Palacios	6,537,389	184,718	135,396	756,537
00968	Palestine	43,893,005	1,421,630	620,347	5,069,445
00967	Palm Valley	4,363	19,069	21,572	515
00970	Palmer	3,058,754	202,441	118,584	355,053
00969	Palmhurst	1,571,835	81,764	107,922	180,427
00971	Palmview	2,485,141	74,861	225,484	287,907
00972	Pampa	40,459,983	1,847,057	657,315	4,676,116
00974	Panhandle	3,563,486	96,918	45,890	412,715
00973	Panorama Village	2,373,845	40,477	49,564	274,194
00975	Pantego	16,098,502	494,371	230,553	1,860,392
00976	Paris	68,077,931	832,402	1,269,458	7,852,928
00977	Parker	4,032,142	240,419	107,811	466,995
00978	Pasadena	494,053,033	9,922,508	5,133,593	57,096,071
00983	Pearland	189,466,838	8,730,203	4,682,869	21,990,446
00984	Pearsall	7,287,957	115,383	190,104	838,300
00988	Pecos City	19,763,043	506,232	412,242	2,285,793
00989	Pelican Bay	276,006	26,953	41,196	32,399
00991	Penitas	1,071,345	69,882	108,624	125,480
00994	Perryton	25,410,884	488,196	292,583	2,936,241
00995	Petersburg		5,273	11,172	-
00997	Petrolia		1,406	2,329	-
01000	Pflugerville	77,041,104	4,581,291	2,312,116	8,941,470
01002	Pharr	100,021,866	4,995,619	2,890,028	11,588,162
01004	Pilot Point	6,549,093	473,340	270,480	760,430
01005	Pinehurst	5,910,691	211,419	85,005	684,152
01003	Pineland	2,358,750	12,534	19,463	272,303
01001	Piney Point Village	866,437	45,344	41,009	100,634
01006	Pittsburg	9,049,717	204,374	132,834	1,045,851
01007	Plains	2,321,990	56,058	38,585	268,801
01008	Plainview	44,686,486	883,672	529,741	5,163,058
01010	Plano	1,173,020,952	34,367,369	14,362,499	135,783,108
01012	Pleasanton	20,619,016	1,120,404	522,507	2,392,752
01013	Point	706,867	35,438	26,390	81,665
01017	Ponder	1,422,127	54,819	47,752	165,520
01014	Port Aransas	18,386,333	1,300,267	632,075	2,131,206
11016	Port Arthur	201,167,623	6,299,637	2,272,601	23,246,381
01018	Port Isabel	7,011,155	325,055	242,838	810,052
01020	Port Lavaca	12,422,107	292,877	268,695	1,434,117
01022	Port Neches	49,740,702	1,260,436	578,182	5,747,626
01019	Portland	30,628,674	2,030,794	806,327	3,550,303
01024	Post	2,254,785	209,549	83,820	261,170
01026	Poteet	1,908,402	30,931	65,532	220,272
01028	Poth	816,463	16,915	27,283	94,518
01030	Pottsboro	2,149,235	77,652	86,280	249,975

Schedule of Changes in Fiduciary Net Position (by Participating City)
For the Year Ended December 31, 2023
CONTINUED

DEDUCTIONS				
Retirement Benefits	Member Account Refunds	Administrative Expenses	Other	Balance at December 31, 2023
348,949	67,479	4,814	34	7,192,765
2,591,552	21,962	32,319	226	48,358,369
371	1,800	3	0	43,345
60,451	17,106	2,252	16	3,655,007
17,728	1,100	1,157	8	1,921,955
34,410	155,694	1,830	13	2,881,447
2,776,789	226,392	29,791	208	44,607,291
128,846	13,020	2,624	18	3,974,500
297,632	8,061	1,748	12	2,430,626
978,785	4,342	11,853	83	17,688,755
3,950,379	358,973	50,126	350	73,672,891
288,711	39,028	2,969	21	4,516,639
28,372,898	389,541	363,772	2,542	537,076,452
5,879,498	539,310	139,505	975	218,311,068
370,668	244,362	5,366	37	7,811,309
1,005,345	213,033	14,552	102	21,734,279
1,873	5,421	203	1	369,057
1,553	27,311	789	6	1,345,672
1,267,533	129,254	18,710	131	27,712,275
				16,446
				3,734
3,359,467	288,393	56,726	396	89,171,000
5,498,874	859,497	73,646	515	113,063,143
176,388	15,068	4,822	34	7,857,032
431,992	8,056	4,352	30	6,446,837
138,567	10,625	1,737	12	2,512,108
61,026	3,503	638	4	988,254
443,074	13,640	6,663	47	9,969,351
81,996	6,509	1,710	12	2,595,207
2,616,089	175,381	32,903	230	48,438,355
57,501,612	786,101	863,698	6,035	1,298,376,483
1,045,721	157,553	15,182	106	23,436,118
17,857	7,978	520	4	823,999
55,771		1,047	7	1,633,393
997,217	47,079	13,538	95	21,391,952
13,472,904	485,489	148,120	1,035	218,878,694
188,083	94,550	5,162	36	8,101,268
565,216	88,052	9,146	64	13,755,317
3,616,939	14,588	36,624	256	53,658,538
1,403,393	111,357	22,552	158	35,478,637
152,743	12,390	1,660	12	2,642,519
56,469	5,899	1,405	10	2,161,354
24,649	2,538	601	4	927,387
74,990	847	1,582	11	2,485,711

Schedule of Changes in Fiduciary Net Position (by Participating City)
For the Year Ended December 31, 2023
CONTINUED

City Number	Participating City	Balance at January 1, 2023	ADDITIONS		
			City Contributions	Member Contributions	Net Investment Income
01031	Prairie View	498,656	41,314	76,791	58,489
01032	Premont	1,092,273	7,705	43,777	125,060
01029	Presidio	2,366,187	40,180	96,124	274,007
01033	Primera	858,249	44,529	54,704	98,590
01034	Princeton	11,827,159	1,278,107	758,843	1,375,003
01036	Prosper	38,295,193	4,011,261	1,988,585	4,472,057
01037	Providence Village	441,242	52,097	41,236	51,706
01042	Quanah	3,368,059	40,939	29,453	388,789
01045	Queen City	1,070,646	41,166	33,145	123,043
01044	Quinlan	1,365,034	104,357	61,872	159,221
01047	Quintana	273,215	28,197	23,248	31,974
01046	Quitaque	326,927	5,248	7,673	37,967
01048	Quitman	5,485,594	80,821	62,894	635,523
01050	Ralls	1,613,117	19,404	18,949	185,830
01051	Rancho Viejo	2,675,875	36,389	46,313	308,539
01052	Ranger	3,104,750	89,781	67,420	357,666
01054	Rankin	850,467	28,644	14,880	98,354
01055	Ransom Canyon	2,004,636	155,733	45,746	232,932
01058	Raymondville	10,411,589	43,512	180,228	1,201,500
01061	Red Oak	13,723,966	725,381	789,684	1,597,055
01062	Redwater	411,176	8,855	23,391	47,842
01064	Refugio	3,066,625	10,947	74,980	354,566
01065	Reklaw	1,600,750	41,252	18,923	185,490
01066	Reno (Lamar County)	1,600,903	43,833	44,002	185,020
01069	Reno (Parker County)	742,407	34,098	73,896	86,247
01067	Rhome	1,589,989	91,563	92,622	183,985
01068	Rice	368,535	6,244	25,803	42,375
01070	Richardson	556,188,314	13,660,299	6,095,210	64,261,674
01073	Richland Hills	33,090,652	969,580	423,662	3,824,000
01074	Richland Springs	213,114		2,536	24,544
01076	Richmond	50,314,758	1,699,258	796,172	5,827,206
01077	Richwood	4,271,113	170,510	74,071	493,798
01072	Riesel	543,374	28,302	24,148	63,204
01075	Rio Grande City	13,013,767	464,633	403,443	1,509,389
01078	Rio Hondo	13,198	57,821	33,578	1,559
01079	Rio Vista	612,723	17,752	33,670	71,841
01080	Rising Star	293,390	986	12,644	32,821
01082	River Oaks	15,224,705	544,659	287,744	1,760,974
01084	Roanoke	46,213,645	2,477,221	1,009,933	5,371,388
01088	Robert Lee	144,335	13,503	12,759	16,587
01089	Robinson	14,341,173	620,468	308,471	1,664,001
21090	Robstown	17,754,213	199,556	203,214	2,048,821
11090	Robstown Utility Systems	15,235,194	478,670	132,449	1,759,225
01092	Roby	722,750	5,082	7,100	82,797

Schedule of Changes in Fiduciary Net Position (by Participating City)
For the Year Ended December 31, 2023
CONTINUED

DEDUCTIONS				
Retirement Benefits	Member Account Refunds	Administrative Expenses	Other	Balance at December 31, 2023
8,848	8,835	367	3	657,198
39,612	4,062	804	6	1,224,330
60,954	61,345	1,742	12	2,652,445
26,527	8,953	632	4	1,019,956
218,789	47,625	8,708	61	14,963,929
392,732	106,826	28,197	197	48,239,144
38,496	1,818	325	2	545,640
194,714		2,480	17	3,630,029
37,153	289	788	6	1,229,763
3,845	18,390	1,005	7	1,667,237
	2,710	201	1	353,721
10,844		241	2	366,728
120,223	25,454	4,039	28	6,115,088
136,966		1,188	8	1,699,138
160,747	8,037	1,970	14	2,896,347
37,229	42,636	2,286	16	3,537,449
22,016	14,975	626	4	954,724
64,401		1,476	10	2,373,160
548,593	175,114	7,666	54	11,105,403
338,532	2,635	10,105	71	16,484,743
4,230	13,244	303	2	473,485
62,855	45,601	2,258	16	3,396,389
46,991	83,367	1,179	8	1,714,870
14,657		1,179	8	1,857,915
76,296	35,595	547	4	824,206
52,287		1,171	8	1,904,694
11,207		271	2	431,477
33,356,762	275,414	409,523	2,861	606,160,938
1,970,725	44,154	24,365	170	36,268,480
10,184		157	1	229,852
2,208,075	121,658	37,047	259	56,270,355
372,132	5,002	3,145	22	4,629,191
23,669	12,491	400	3	622,465
416,808	91,970	9,582	67	14,872,803
		10	0	106,147
17,865		451	3	717,666
10,257	2,697	216	2	326,668
723,336	26,797	11,210	78	17,056,661
2,071,151	12,616	34,027	238	52,954,155
15,703		106	1	171,374
445,044	45,596	10,559	74	16,432,841
876,415	17,838	13,072	91	19,298,388
1,021,169	29,469	11,218	78	16,543,603
49,704		532	4	767,489

Schedule of Changes in Fiduciary Net Position (by Participating City)
For the Year Ended December 31, 2023
 CONTINUED

City Number	Participating City	Balance at January 1, 2023	ADDITIONS		
			City Contributions	Member Contributions	Net Investment Income
01096	Rockdale	6,339,442	224,972	133,753	734,935
01098	Rockport	33,066,070	1,409,355	566,657	3,826,102
01100	Rocksprings	517,632	4,708	19,732	59,308
01102	Rockwall	108,726,141	4,493,159	1,971,038	12,612,750
01104	Rogers	923,089	35,524	27,920	106,913
01105	Rollingwood	3,271,999	183,594	107,906	379,152
01106	Roma	14,730,724	395,389	224,909	1,703,565
01109	Roscoe	654,213	4,781	14,151	75,714
01112	Rosebud	410,873	7,989	22,191	46,540
01114	Rosenberg	80,483,988	3,268,300	1,425,428	9,325,718
01116	Rotan	807,052		14,767	93,443
01118	Round Rock	324,386,853	14,591,459	6,304,954	37,622,396
01119	Rowlett	148,051,023	4,762,842	2,546,975	17,143,948
20696	Roy H. Laird Memorial Hospital	11,822,840	54,874		1,361,298
01120	Royse City	13,447,099	1,310,264	587,939	1,565,534
01122	Rule	314,969	13,829	9,407	36,389
01123	Runaway Bay	1,034,722	16,020	46,570	119,287
01124	Runge	813,460	13,871	8,385	93,771
01126	Rusk	5,486,972	134,346	133,900	635,254
01128	Sabinal	1,222,207	8,631	13,487	139,372
01129	Sachse	39,121,751	2,031,786	998,070	4,540,639
01131	Saginaw	42,329,549	2,456,559	809,220	4,907,842
01135	Saint Hedwig	5,016	13,272	20,962	593
01130	Saint Jo	591,462	11,690	13,547	76,401
01133	Salado	1,050,586	47,558	40,648	121,761
01132	San Angelo	227,687,126	7,558,216	3,128,771	26,298,210
21136	San Antonio	1,756,864,543	66,253,155	30,391,227	202,999,038
11136	San Antonio Water System	231,029,724	5,267,178	4,377,171	26,711,088
01138	San Augustine	5,891,757	134,214	103,504	679,641
01140	San Benito	14,150,772	345,959	373,607	1,634,924
01142	San Diego		16,088	30,586	-
01144	San Felipe	355,274	9,102	12,572	41,164
01148	San Juan	17,170,289	452,980	641,010	1,986,819
01150	San Marcos	233,494,465	11,031,859	4,208,331	27,048,740
01152	San Saba	7,065,488	214,914	146,699	817,869
01145	Sandy Oaks	27,987	12,358	19,308	3,306
01146	Sanger	12,269,302	773,936	423,246	1,422,148
01153	Sansom Park	3,741,776	286,838	203,638	430,438
01154	Santa Anna	761,093			88,133
01155	Santa Fe	14,146,179	739,995	281,826	1,636,055
01156	Santa Rosa		21,595	18,363	-
01158	Savoy	413,364	2,894	12,766	47,804
01159	Schertz	78,352,223	4,384,538	1,896,896	9,095,570
01160	Schulenburg	13,744,742	416,168	162,475	1,588,803

Schedule of Changes in Fiduciary Net Position (by Participating City)
For the Year Ended December 31, 2023
CONTINUED

DEDUCTIONS				
Retirement Benefits	Member Account Refunds	Administrative Expenses	Other	Balance at December 31, 2023
363,244	41,987	4,668	33	7,023,171
2,310,425	51,461	24,347	170	36,481,782
25,236	13,049	381	3	562,710
3,819,653	104,028	80,055	559	123,798,792
69,040	23,617	680	5	1,000,105
150,487	5,089	2,409	17	3,784,649
763,886	34,646	10,846	76	16,245,133
33,584	4,860	482	3	709,929
13,813	6,232	303	2	467,242
3,918,764	142,037	59,261	414	90,382,957
1,898	474	594	4	912,292
13,724,489	310,730	238,847	1,669	368,629,928
6,440,219	283,005	109,010	762	165,671,791
861,828	744	8,705	61	12,367,674
325,371	50,620	9,901	69	16,524,875
16,442	1,802	232	2	356,117
40,759	19,400	762	5	1,155,673
9,843	4,265	599	4	914,776
253,533	19,427	4,040	28	6,113,443
91,844	3,270	900	6	1,287,676
1,296,777	47,192	28,805	201	45,319,269
1,985,719	12,760	31,167	218	48,473,306
		4	0	39,840
51,600	5,708	436	3	635,355
42,941	7,886	774	5	1,208,947
14,515,168	215,279	167,647	1,171	249,773,057
111,209,315	3,187,290	1,293,584	9,038	1,940,808,737
11,534,594	312,801	170,108	1,189	255,366,470
299,604	36,626	4,338	30	6,468,517
809,946	139,664	10,419	73	15,545,160
				46,674
16,099		262	2	401,750
717,677	223,447	12,643	88	19,297,242
11,115,184	264,540	171,923	1,201	264,230,546
268,802	12,225	5,202	36	7,958,706
	1,615	21	0	61,324
680,580	25,644	9,034	63	14,173,311
75,459	38,214	2,755	19	4,546,242
38		560	4	848,623
971,493	55,058	10,416	73	15,767,014
				39,958
8,492	1,677	304	2	466,353
3,276,877	297,395	57,691	403	90,096,861
850,458	10,555	10,120	71	15,040,984

Schedule of Changes in Fiduciary Net Position (by Participating City)
For the Year Ended December 31, 2023
 CONTINUED

City Number	Participating City	Balance at January 1, 2023	ADDITIONS		
			City Contributions	Member Contributions	Net Investment Income
01161	Seabrook	38,988,433	1,386,571	603,383	4,509,563
01162	Seadrift	1,035,629	33,491	36,012	120,433
01164	Seagoville	22,273,234	828,836	526,962	2,582,395
01166	Seagraves	2,093,727	77,347	46,040	240,494
01167	Sealy	18,106,545	476,676	263,358	2,096,365
01168	Seguin	104,645,920	6,952,552	2,192,247	12,125,632
01169	Selma	23,482,046	1,002,652	460,233	2,726,722
01170	Seminole	18,290,871	460,242	272,332	2,111,105
01171	Seven Points	1,974,778	25,110	46,400	228,047
01172	Seymour	4,508,262	90,502	75,419	520,085
01165	Shady Shores	171,171	23,195	14,951	20,053
01177	Shallowater	1,856,397	38,523	53,128	214,595
01174	Shamrock	1,937,593	56,158	31,764	223,380
01173	Shavano Park	11,115,076	535,849	262,487	1,289,214
01175	Shenandoah	15,302,185	884,886	335,729	1,775,711
01181	Shepherd	834,443	8,793	24,259	96,586
01176	Sherman	149,953,187	5,002,771	2,558,030	17,328,382
01178	Shiner	4,607,037	164,670	78,865	533,302
01179	Shoreacres	2,321,792	24,433	27,577	267,646
01180	Silsbee	17,487,462	696,690	262,902	2,023,247
01182	Silverton	823,323	6,066	8,071	94,721
01183	Simonton	61,116	34,636	21,475	7,193
01184	Sinton	9,575,355	251,674	138,065	1,107,655
01185	Skellytown	332,772	4,954	14,390	38,396
01186	Slaton	8,723,639	114,834	106,493	1,004,944
01187	Smiley		1,822	1,863	-
01188	Smithville	7,479,347	371,111	176,552	866,258
01189	Smyer	411,004	8,963	12,088	47,780
01193	Snook	3,075	1,484	5,226	363
01190	Snyder	33,126,032	723,669	382,316	3,823,982
01191	Somerset	462,387	17,976	37,607	52,963
01192	Somerville	1,588,533	42,842	32,905	183,698
01194	Sonora	4,779,870	129,225	73,174	551,173
01196	Sour Lake	1,615,487	47,786	63,714	186,771
01198	South Houston	28,831,385	588,866	318,653	3,336,463
01199	South Padre Island	42,942,348	1,336,623	748,509	4,972,141
01197	Southlake	119,979,053	3,967,997	2,229,213	13,917,389
01200	Southmayd	195,516	12,636	19,321	22,881
01202	Southside Place	6,018,271	192,928	123,220	696,808
01204	Spearman	6,440,788	100,306	73,782	740,016
01201	Splendora	922,503	229,195	144,929	108,396
01205	Spring Valley	12,663,059	213,315	243,590	1,463,876
01203	Springtown	6,668,041	236,539	171,051	771,445
01206	Spur	931,853	15,313	14,584	107,473

Schedule of Changes in Fiduciary Net Position (by Participating City)
For the Year Ended December 31, 2023
CONTINUED

DEDUCTIONS				
Retirement Benefits	Member Account Refunds	Administrative Expenses	Other	Balance at December 31, 2023
2,235,001	50,417	28,707	201	43,173,624
19,554	34,765	763	5	1,170,477
1,079,970	69,445	16,400	115	25,045,498
115,060	1,447	1,542	11	2,339,550
874,198	33,055	13,332	93	20,022,266
5,942,483	244,393	77,051	538	119,651,885
766,681	14,909	17,290	121	26,872,653
974,290	57,904	13,468	94	20,088,795
66,217	17,663	1,454	10	2,188,990
366,291	68,381	3,319	23	4,756,254
		126	1	229,242
60,418	13,718	1,367	10	2,087,130
141,398	2,034	1,427	10	2,104,025
249,850	17,607	8,184	57	12,926,928
586,342		11,267	79	17,700,824
27,816	23,267	614	4	912,380
8,870,876	181,237	110,411	771	165,679,075
226,787	27,155	3,392	24	5,126,518
114,507		1,710	12	2,525,220
1,124,813	38,073	12,876	90	19,294,448
74,954		606	4	856,617
		45	0	124,375
365,676	35,715	7,050	49	10,664,259
12,182		245	2	378,083
523,566	44,694	6,423	45	9,375,181
550				3,135
576,383	39,716	5,507	38	8,271,624
		303	2	479,530
		2	0	10,146
1,959,940	82,522	24,391	170	35,988,976
8,446		340	2	562,144
51,128	4,142	1,170	8	1,791,529
264,677	23,543	3,519	25	5,241,678
34,663	20,499	1,189	8	1,857,399
1,477,751	85,534	21,229	148	31,490,706
1,700,553	155,522	31,619	221	48,111,707
4,854,149	371,735	88,341	617	134,778,811
6,039		144	1	244,170
256,588	5,040	4,431	31	6,765,138
355,498	46,209	4,742	33	6,948,410
45,123	13,621	679	5	1,345,597
707,217	3,323	9,324	65	13,863,911
222,002	26,037	4,910	34	7,594,093
46,657	1,805	686	5	1,020,070

Schedule of Changes in Fiduciary Net Position (by Participating City)
For the Year Ended December 31, 2023
 CONTINUED

City Number	Participating City	Balance at January 1, 2023	ADDITIONS		
			City Contributions	Member Contributions	Net Investment Income
01207	Stafford	48,776,009	1,600,550	853,301	5,648,300
01208	Stamford	3,928,389	31,334	50,539	453,322
01210	Stanton	4,092,981	76,098	69,054	474,258
01211	Star Harbor	860,336	24,824	7,811	99,108
01212	Stephenville	46,289,921	846,460	674,470	5,347,078
01213	Sterling City	702,825	4,268	19,758	81,333
01214	Stinnett	2,545,976		45,538	293,474
01216	Stockdale	421,530	31,028	34,150	49,326
01218	Stratford	1,662,526	82,009	61,136	190,600
01220	Strawn	10,170	26,546	21,670	1,202
01224	Sudan	947,574	25,944	23,981	109,736
01225	Sugar Land	291,308,372	9,960,443	4,855,124	33,775,914
01223	Sullivan	66,271	17,541	38,466	7,829
01226	Sulphur Springs	43,783,475	719,647	607,297	5,057,217
01228	Sundown	3,337,334	65,923	38,264	385,299
01229	Sunnyvale	8,274,867	728,096	413,357	962,060
01230	Sunray	2,821,381	93,945	49,707	326,270
01227	Sunrise Beach Village	467,348	12,296	38,666	53,633
01231	Sunset Valley	8,087,774	257,202	157,241	935,515
01233	Surfside Beach	1,118,564	84,546	107,700	128,075
01232	Sweeny	5,015,726	176,288	83,546	579,172
01234	Sweetwater	32,620,032	1,185,093	477,585	3,772,107
01236	Taft	3,349,170	216,967	96,064	385,102
01238	Tahoka	3,194,956	19,102	47,517	368,953
01240	Talty	169,973	27,913	13,142	19,962
01241	Tatum	473,113	7,152	19,154	54,799
01246	Taylor	33,692,854	1,605,732	885,050	3,901,945
01248	Teague	3,678,783	147,280	83,344	424,128
01252	Temple	209,913,824	8,566,208	3,569,255	24,275,182
01254	Tenaha	384,452	25	7,209	44,266
01256	Terrell	62,752,361	2,647,171	1,112,926	7,265,566
01258	Terrell Hills	15,163,991	484,769	216,140	1,754,952
21260	Texarkana	55,145,430	1,416,440	627,536	6,366,944
11260	Texarkana Police Dept.	48,100,539	885,585	428,410	5,558,138
31260	Texarkana Water Utilities	42,675,974	1,462,906	613,194	4,935,807
01262	Texas City	153,800,171	4,993,681	2,070,839	17,769,675
11263	Texas Municipal League	23,263,706	508,555	223,377	2,689,152
21263	Texas Municipal League IRP	188,009,848	3,128,894	2,055,430	21,770,420
01265	Texhoma	58,296			6,675
01267	The Colony	110,154,143	4,450,840	2,315,788	12,766,249
01269	Thompsons	246,678	4,698	4,187	28,577
01268	Thorndale	994,251	33,674	23,916	114,778
01272	Thrall- Employer	249,154	14,034	13,341	29,142
01274	Three Rivers	7,827,107	449,548	129,075	907,393

Schedule of Changes in Fiduciary Net Position (by Participating City)
For the Year Ended December 31, 2023
CONTINUED

DEDUCTIONS				
Retirement Benefits	Member Account Refunds	Administrative Expenses	Other	Balance at December 31, 2023
1,947,187	22,920	35,914	251	54,871,888
208,763	273	2,892	20	4,251,635
119,308	5,507	3,014	21	4,584,541
53,235		633	4	938,206
2,583,414	64,364	34,083	238	50,475,829
17,177		517	4	790,485
132,365	12,605	1,875	13	2,738,130
9,420		310	2	526,303
58,551	326	1,224	9	1,936,161
		7	0	59,580
24,112		698	5	1,082,420
10,615,772	522,930	214,491	1,499	328,545,162
	5,250	49	0	124,809
2,254,072	115,790	32,238	225	47,765,312
181,231		2,457	17	3,643,115
289,270	26,243	6,093	43	10,056,730
92,889	6,751	2,077	15	3,189,570
13,923	3,926	344	2	553,748
290,126	57,893	5,955	42	9,083,716
35,894	47,928	824	6	1,354,234
516,471	43,637	3,693	26	5,290,905
1,937,471	120,403	24,018	168	35,972,757
234,372	4,554	2,466	17	3,805,894
134,746	17,167	2,352	16	3,476,246
3,587		125	1	227,277
6,687	36,815	348	2	510,365
1,537,287	83,885	24,808	173	38,439,427
166,744	127,548	2,709	19	4,036,514
10,918,189	329,003	154,560	1,080	234,921,637
15,082	4,584	283	2	416,002
3,204,456	111,177	46,205	323	70,415,863
677,633	10,420	11,165	78	16,920,556
3,535,191	95,271	40,604	284	59,885,001
2,451,935	29,379	35,417	247	52,455,694
2,472,252	115,078	31,422	220	47,068,908
9,072,577	178,485	113,243	791	169,269,268
1,015,287		17,129	120	25,652,255
8,353,194	7,884	138,432	967	206,464,114
5,862		43	0	59,065
5,541,624	109,602	81,107	567	123,954,122
9,170		182	1	274,787
48,744	9,610	732	5	1,107,529
816		183	1	304,670
570,691	53,994	5,763	40	8,682,635

Schedule of Changes in Fiduciary Net Position (by Participating City)
For the Year Ended December 31, 2023
 CONTINUED

City Number	Participating City	Balance at January 1, 2023	ADDITIONS		
			City Contributions	Member Contributions	Net Investment Income
01276	Throckmorton	707,553	10,193	8,452	81,581
01277	Tiki Island	934,819	19,516	33,940	108,708
01278	Timpson	1,054,048	5,863	14,370	121,749
01280	Tioga	674,921	23,428	38,496	78,516
01264	TMRS	55,863,274	2,467,415	1,082,878	6,482,412
01285	Todd Mission	60,267	43,924	24,796	7,120
01283	Tolar	726,110	36,066	28,808	84,262
01286	Tom Bean	437,391	9,847	23,261	50,713
01284	Tomball	47,826,366	1,937,523	1,040,079	5,540,413
01287	Tool	43,501	27,720	37,460	5,139
01290	Trent	310,418	1,928	6,161	36,033
01292	Trenton	440,958	10,466	14,259	50,685
01293	Trinidad	554,449	44,799	21,627	64,044
01294	Trinity	1,836,614	53,776	48,710	211,638
01295	Trophy Club	23,879,770	822,888	454,276	2,766,470
01296	Troup	1,718,081	79,600	46,011	198,799
01297	Troy	1,639,585	95,575	69,981	191,258
01298	Tulia	10,039,531	142,390	100,986	1,157,374
01299	Turkey	229,639	8,801	8,398	26,515
01300	Tuscola	22,083	3,972	4,253	2,604
31263	TX Health Benefits Pool	40,215,097	1,095,273	737,297	4,656,718
01301	Tye	1,076,623	43,221	52,163	124,880
01304	Tyler	236,204,300	9,792,055	3,319,341	27,328,225
01307	Uhland	82,185	63,832	34,371	9,710
01305	Universal City	38,154,271	1,848,512	687,179	4,423,552
01306	University Park	104,944,929	1,644,991	1,409,418	12,114,211
01308	Uvalde	20,024,393	719,728	408,937	2,315,922
01312	Valley Mills	159,535	7,213	21,137	18,606
01313	Valley View	110,883	15,585	15,711	12,957
01314	Van	3,154,625	64,795	61,709	365,046
01316	Van Alstyne	6,573,069	508,381	276,724	763,678
01318	Van Horn	4,863,662	101,194	63,405	562,858
01320	Vega	1,760,656	54,610	18,494	203,594
01324	Venus	2,901,390	320,191	207,531	337,268
01326	Vernon	22,113,180	569,749	338,840	2,550,012
01328	Victoria	183,176,955	5,798,543	2,159,608	21,160,107
01329	Vidor	20,728,845	572,353	279,782	2,395,219
01500	Village Fire Department	21,296,320	356,929	401,689	2,458,444
01327	Village of the Hills	87,543	14,687	8,197	10,279
01331	Village of Volente	40,752			3,680
01325	Von Ormy	7,537	41,721	27,814	890
01330	Waco	510,250,714	18,812,825	8,344,517	58,959,569
01332	Waelder	1,323,621	18,902	46,103	152,923
01334	Wake Village	4,543,407	184,461	93,028	525,857

Schedule of Changes in Fiduciary Net Position (by Participating City)
For the Year Ended December 31, 2023
CONTINUED

DEDUCTIONS				
Retirement Benefits	Member Account Refunds	Administrative Expenses	Other	Balance at December 31, 2023
49,281	728	521	4	757,246
8,625	15,244	688	5	1,072,421
56,035	1,479	776	5	1,137,734
	20,152	497	3	794,708
2,924,511	64,897	41,132	287	62,865,152
		44	0	136,062
32,244	3,226	535	4	839,237
2,807		322	2	518,081
2,617,824	102,620	35,215	246	53,588,475
5,838	1,992	32	0	105,958
12,106		229	2	342,204
29,920	6,735	325	2	479,387
36,709	10,587	408	3	637,214
68,229	6,283	1,352	9	2,074,866
901,290	40,130	17,583	123	26,964,278
106,985	15,154	1,265	9	1,919,077
81,435	797	1,207	8	1,912,952
587,879	23,157	7,392	52	10,821,801
20,633	628	169	1	251,922
		16	0	32,897
1,951,524	146,419	29,610	207	44,576,626
64,317		793	6	1,231,772
14,322,677	518,811	173,918	1,215	261,627,300
		61	0	190,037
1,905,974	101,539	28,093	196	43,077,712
7,454,264	34,047	77,271	540	112,547,427
862,044	161,274	14,744	103	22,430,816
	27,068	117	1	179,304
4,990	949	82	1	149,114
180,088	5,126	2,323	16	3,458,622
137,966	52,634	4,840	34	7,926,378
279,553	36,064	3,581	25	5,271,895
147,477		1,296	9	1,888,571
111,866	70,689	2,136	15	3,581,675
1,275,276	64,070	16,282	114	24,216,040
11,784,065	300,988	134,874	942	200,074,343
1,250,716	18,463	15,263	107	22,691,649
912,366	2,998	15,681	110	23,582,228
		64	0	120,642
1,796		30	0	42,606
		6	0	77,956
33,146,455	700,194	375,699	2,625	562,142,652
43,498	2,231	975	7	1,494,838
244,201	11,058	3,345	23	5,088,124

Schedule of Changes in Fiduciary Net Position (by Participating City)
For the Year Ended December 31, 2023
CONTINUED

City Number	Participating City	Balance at January 1, 2023	ADDITIONS		
			City Contributions	Member Contributions	Net Investment Income
01336	Waller	4,175,123	246,082	151,635	482,137
01337	Wallis	1,538,846	50,933	54,474	179,333
01338	Walnut Springs	194,729	4,026	4,995	22,578
01340	Waskom	2,283,671	185,157	55,651	264,294
01341	Watauga	57,253,941	1,818,242	863,481	6,629,122
01342	Waxahachie	77,689,926	3,966,930	1,747,547	9,013,995
01344	Weatherford	130,730,729	3,714,552	1,924,639	15,125,065
01345	Webster	68,298,940	2,441,002	1,000,412	7,911,107
01346	Weimar	8,517,161	205,252	109,343	984,915
01350	Wellington	3,631,106	20,014	19,738	417,856
01352	Wells	379,109	19,671	19,671	43,808
01354	Weslaco	45,893,762	1,134,738	981,850	5,301,574
01356	West	2,724,907	68,932	52,539	314,378
01358	West Columbia	5,771,215	77,811	102,925	666,405
01359	West Lake Hills	9,606,268	396,315	172,525	1,112,630
01361	West Orange	10,796,657	293,553	108,094	1,249,530
01365	West Tawakoni	1,483,773	37,402	37,032	171,792
01364	West Univ. Place	52,858,991	1,398,365	781,834	6,109,275
01363	Westlake	10,852,428	562,313	331,613	1,263,452
01362	Westover Hills	2,582,686	90,565	112,604	299,026
01366	Westworth Village	7,648,687	274,786	161,232	888,487
01368	Wharton	19,344,733	298,858	302,488	2,235,294
01370	Wheeler	1,347,055	30,778	14,826	155,526
01372	White Deer	597,032	32,692	15,435	68,470
01377	White Oak	14,235,276	376,978	193,304	1,646,861
01378	White Settlement	33,029,781	1,521,919	628,151	3,820,126
01374	Whiteface	940,552	4,179	7,914	108,993
01375	Whitehouse	6,320,155	256,354	181,169	732,171
01376	Whitesboro	8,337,987	187,584	169,606	965,089
01380	Whitewright	1,628,432	32,049	60,016	188,564
01382	Whitney	1,429,282	39,160	63,571	165,665
01384	Wichita Falls	263,743,301	9,040,321	3,909,517	30,462,384
01386	Willis	7,395,570	235,082	194,283	857,752
01387	Willow Park	3,529,002	215,757	218,567	410,282
01388	Wills Point	4,698,153	138,142	66,224	541,448
01390	Wilmer	5,361,509	284,845	379,793	621,947
01392	Wimberley	613,798	50,409	41,251	71,259
01393	Windcrest	11,779,586	554,489	301,671	1,362,567
01395	Winfield	108,115	1,928	3,825	12,402
01396	Wink	1,249,622	34,298	39,948	145,108
01398	Winnsboro	5,891,314	167,260	94,497	681,065
01399	Winona	840,470	13,688	19,049	96,944
01400	Winters	3,256,950	70,571	32,856	375,425
01402	Wolfe City		1,166	2,914	-

Schedule of Changes in Fiduciary Net Position (by Participating City)
For the Year Ended December 31, 2023
CONTINUED

DEDUCTIONS				
Retirement Benefits	Member Account Refunds	Administrative Expenses	Other	Balance at December 31, 2023
314,900	17,363	3,074	21	4,719,618
67,597	5,967	1,133	8	1,748,880
7,010		143	1	219,174
159,164	622	1,681	12	2,627,293
2,418,377	133,342	42,156	295	63,970,615
3,813,597	123,217	57,203	400	88,423,981
7,226,326	308,946	96,257	673	143,862,784
3,562,518	40,952	50,289	351	75,997,351
494,979	57,694	6,271	44	9,257,683
197,158	9,963	2,674	19	3,878,901
17,851		279	2	444,127
3,512,289	191,237	33,792	236	49,574,370
162,316	25,941	2,006	14	2,970,478
209,847	5,826	4,249	30	6,398,405
470,150		7,073	49	10,810,466
454,596		7,950	56	11,985,233
144,201	4,012	1,093	8	1,580,686
3,115,280	52,809	38,920	272	57,941,185
531,282		7,991	56	12,470,477
140,805	17,721	1,902	13	2,924,440
234,132	47,057	5,632	39	8,686,332
903,567	85,246	14,244	100	21,178,218
85,797	15,154	992	7	1,446,235
32,840	7,417	440	3	672,930
740,400	18,684	10,481	73	15,682,780
1,978,884	116,001	24,320	170	36,880,601
814		693	5	1,060,126
174,440	34,988	4,654	33	7,275,735
332,970	13,116	6,139	43	9,307,998
50,901	9,032	1,199	8	1,847,920
41,251	7,343	1,052	7	1,648,024
17,920,769	624,118	194,195	1,357	288,415,085
461,109	5,875	5,445	38	8,210,220
137,738	36,078	2,598	18	4,197,175
247,352	24,964	3,459	24	5,168,167
155,725	58,094	3,948	28	6,430,299
41,313		452	3	734,948
551,021	91,371	8,673	61	13,347,187
		80	1	126,189
41,694		920	6	1,426,356
310,904	49,480	4,338	30	6,469,384
36,926		619	4	932,603
204,315	38,200	2,398	17	3,490,874
				4,079

Schedule of Changes in Fiduciary Net Position (by Participating City)
For the Year Ended December 31, 2023
CONTINUED

City Number	Participating City	Balance at January 1, 2023	ADDITIONS		
			City Contributions	Member Contributions	Net Investment Income
01403	Wolfforth	4,609,587	341,994	156,879	533,686
01409	Woodcreek	230,729	18,936	14,487	26,519
01404	Woodsboro	1,001,265	40,802	27,238	115,754
01406	Woodville	8,894,529	275,066	114,680	1,028,530
01407	Woodway	30,252,569	1,192,146	484,331	3,506,151
01408	Wortham	937,385	24,515	22,526	108,165
01410	Wylie	87,975,741	4,468,567	2,048,348	10,214,786
01412	Yoakum	25,557,990	945,984	334,270	2,954,449
01414	Yorktown	1,603,606		22,194	184,076
01415	Zavalla	734,187	5,455	18,012	83,947
	Totals	\$35,600,490,787	\$1,185,483,912	\$582,825,289	\$4,119,210,666

Schedule of Changes in Fiduciary Net Position (by Participating City)
For the Year Ended December 31, 2023

CONTINUED

DEDUCTIONS				
Retirement Benefits	Member Account Refunds	Administrative Expenses	Other	Balance at December 31, 2023
251,070	6,135	3,394	24	5,381,523
6,065		170	1	284,435
21,650	2,731	737	5	1,159,936
333,646	4,564	6,549	46	9,967,999
1,542,087	137,182	22,275	156	33,733,496
29,065	12,365	690	5	1,050,468
3,043,668	231,793	64,777	453	101,366,752
1,720,331	44,760	18,818	131	28,008,652
170,156		1,181	8	1,638,531
66,357	29,875	541	4	744,825
\$1,904,627,632	\$70,645,434	\$26,212,728	\$183,147	\$39,486,341,713

Notes to Schedule of Changes in Fiduciary Net Position (by Participating City) For the Year Ended December 31, 2023

Background and Reporting Entity

The Texas Municipal Retirement System (TMRS) is a statewide public retirement plan created by the State of Texas and administered in accordance with Texas Government Code, Title 8, Subtitle G, (TMRS Act) for the benefit of the employees of Texas participating cities. Under GASB, TMRS is an agent multiple-employer public employee retirement system, administering a defined benefit cash-balance plan. TMRS issues a publicly available Annual Comprehensive Financial Report (Report), including financial statements, notes and required supplementary information, which can be obtained at tmrs.com. Questions and requests for additional information should be emailed to Pensionaccounting@tmrs.com.

Pension Trust Fund Description

Each participating city chooses its own plan provisions from various options. Whatever plan options are chosen, each city's funding objective is to accumulate sufficient assets to pay benefits when they become due.

Contributions. Active member contribution rates are adopted by a participating city and may be either 5%, 6% or 7% of the member's total compensation. A participating city must pay its required city contribution rate, which is determined annually by TMRS' external actuary using the Entry Age Normal actuarial cost method. Contributions are required to be deposited with TMRS monthly. There is a one-year delay between the actuarial valuation that serves as the basis for a city's contribution rate and the calendar year when the rate goes into effect.

Benefits. A member's retirement benefit is calculated based on the sum of the member's contributions with interest, the city-financed monetary credits with interest, and their age at retirement and other actuarial factors. When a member applies for retirement, they have three options to determine how their lifetime monthly benefit will be paid: the retiree life only option, one of three survivor lifetime options or one of three guaranteed term options. A member may also choose to receive a portion of their benefit as a lump sum distribution. A participating city can grant a Cost of Living Adjustment (COLA) and increase the retiree's monthly benefit payment annually, effective January 1.

Notes to Schedule of Changes in Fiduciary Net Position (by Participating City)
For the Year Ended December 31, 2023
CONTINUED

Basis of Presentation and Accounting

The Schedule of Changes in Fiduciary Net Position by Participating City (the Schedule) has been prepared on the accrual basis of accounting based on the provisions of Governmental Accounting Standards Board Statement No. 67, Financial Reporting for Pensions Plans - An Amendment of GASB Statement No. 25 (GASB 67). A separate row has been included for each participating city's separate account.

Investment income. Net investment income allocated to each city includes the annual interest credited to each city's Benefit Accumulation Fund (BAF) as authorized by the Board of Trustees and an allocation of the remaining net investment income based on the city's beginning balance of Fiduciary Net Position.

Contributions. The city and active member contributions for each participating city are recognized and recorded when due, which is in the period the city reports compensation for its member employees. Cities may make contributions to TMRS in excess of their actuarially determined contributions as additional monthly contributions or lump sum contributions.

Benefit payments. Benefits are recorded when payable in accordance with TMRS' plan terms. Refunds are recorded and paid upon receipt of an approved refund application.

Administrative expenses and other (allocation). The administrative expenses and other amounts are allocated to each city based on the city's beginning balance of Fiduciary Net Position.

Fiduciary Net Position. This represents the total assets less liabilities measured in accordance with GASB 67. The individual elements of the Pension Trust Fund as a whole are included in the Statement of Fiduciary Net Position in TMRS' separately issued Report.

Use of estimates. Management of TMRS has made some estimates and assumptions relating to the reporting in the Schedule in conformity with U.S. generally accepted accounting principles (GAAP). Actual results could differ from those estimates.

